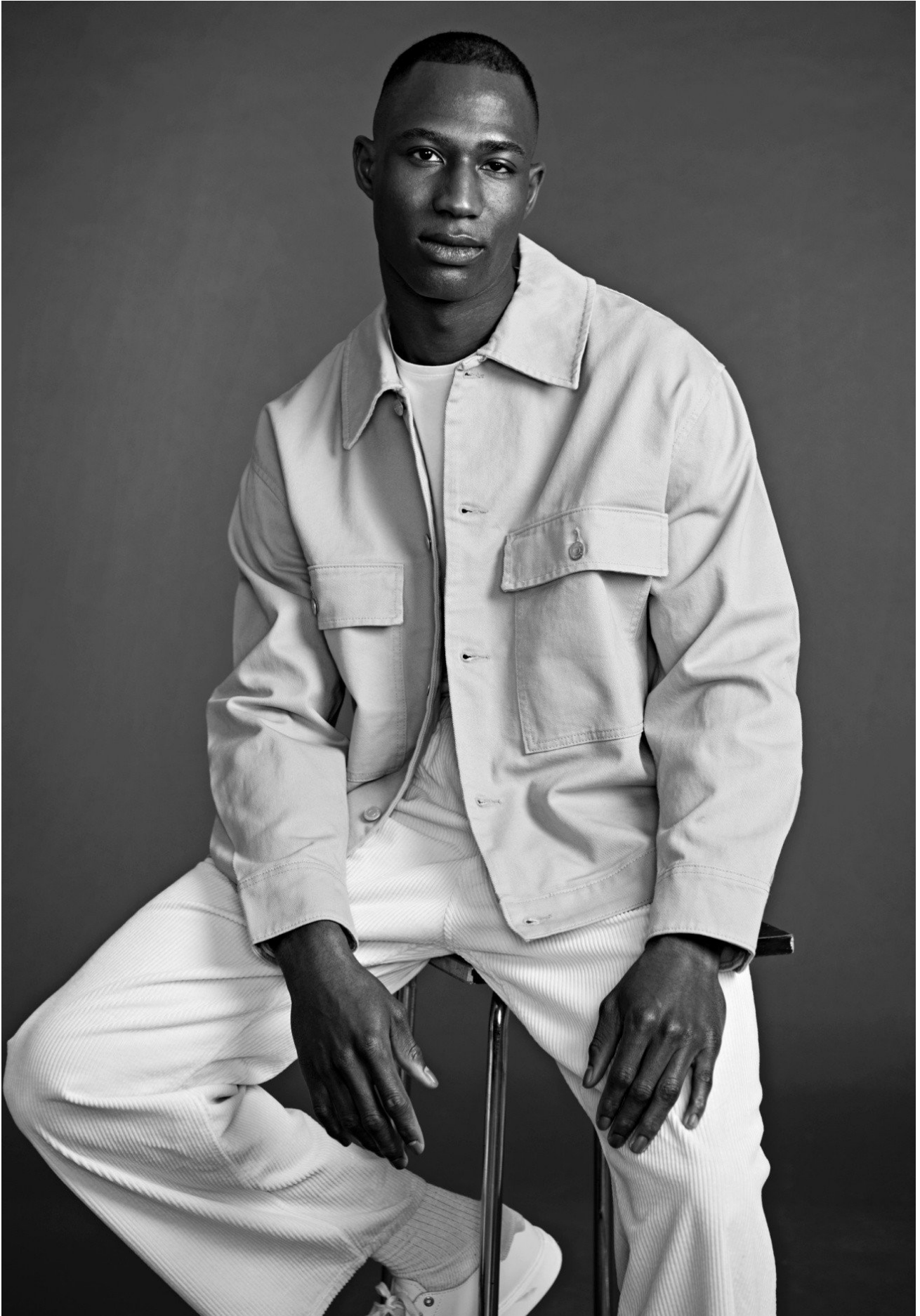


ADRIAN OSHIOKE



HEIGHT 188 CM / 6'2" | CHEST 91 CM / 36" | WAIST 78 / 30.5 | HIPS 97 CM / 38" | HAIR BLACK | EYES BROWN | SHOES 44 / 10
SUIT 50 / 40 | COLLAR 39 / 15.5

wiener
models
A KULT AGENCY

ADRIAN OSHIOKE



HEIGHT 188 CM / 6'2" | CHEST 91 CM / 36" | WAIST 78 / 30.5 | HIPS 97 CM / 38" | HAIR BLACK | EYES BROWN | SHOES 44 / 10
SUIT 50 / 40 | COLLAR 39 / 15.5

wiener
models
A KULT AGENCY

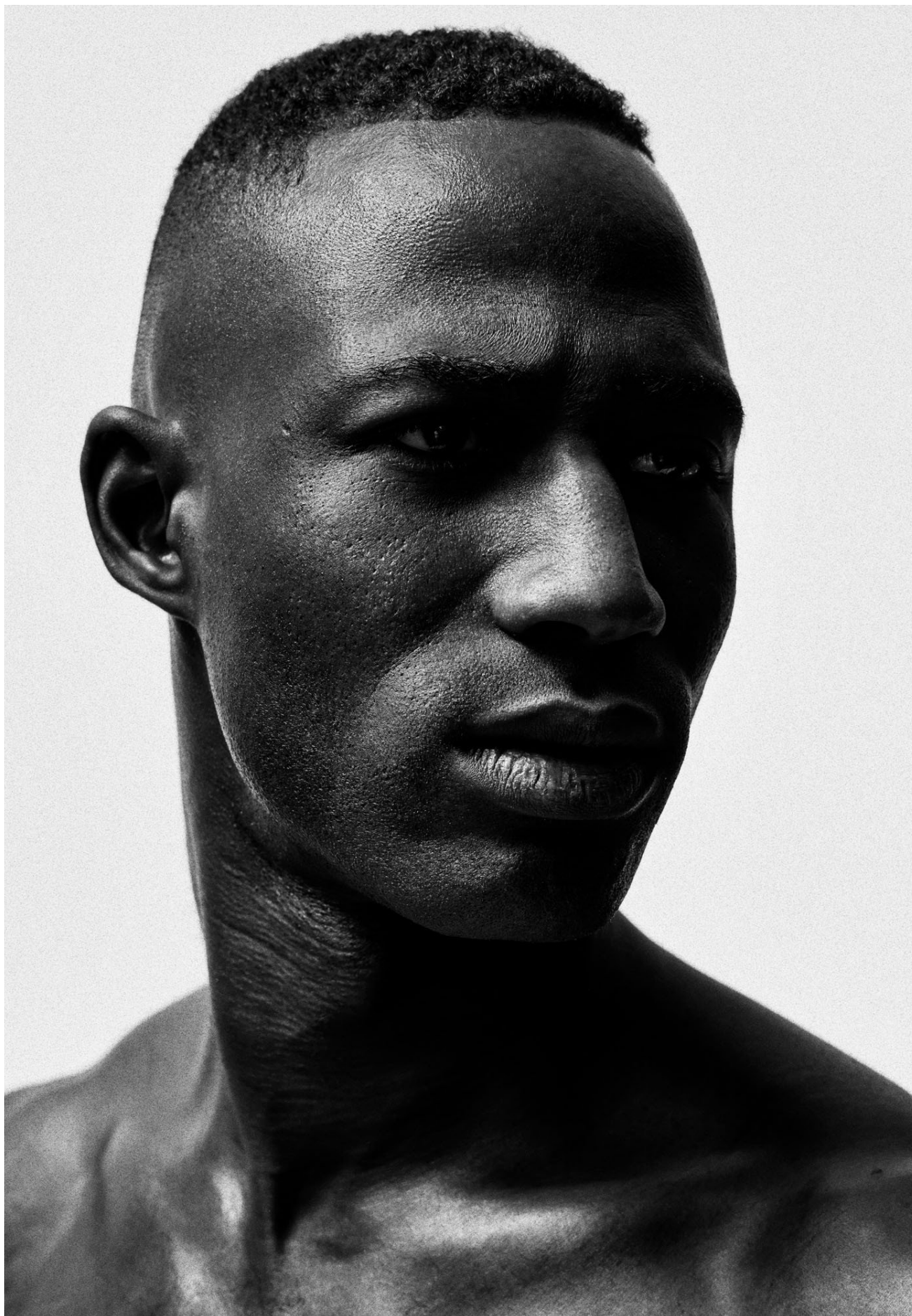
ADRIAN OSHIOKE



HEIGHT 188 CM / 6'2" | CHEST 91 CM / 36" | WAIST 78 / 30.5 | HIPS 97 CM / 38" | HAIR BLACK | EYES BROWN | SHOES 44 / 10
SUIT 50 / 40 | COLLAR 39 / 15.5

wiener
models
A KULT AGENCY

ADRIAN OSHIOKE



HEIGHT 188 CM / 6'2" | CHEST 91 CM / 36" | WAIST 78 / 30.5 | HIPS 97 CM / 38" | HAIR BLACK | EYES BROWN | SHOES 44 / 10
SUIT 50 / 40 | COLLAR 39 / 15.5

wiener
models
A KULT AGENCY

ADRIAN OSHIOKE



HEIGHT 188 CM / 6'2" | CHEST 91 CM / 36" | WAIST 78 / 30.5 | HIPS 97 CM / 38" | HAIR BLACK | EYES BROWN | SHOES 44 / 10
SUIT 50 / 40 | COLLAR 39 / 15.5

wiener
models
A KULT AGENCY

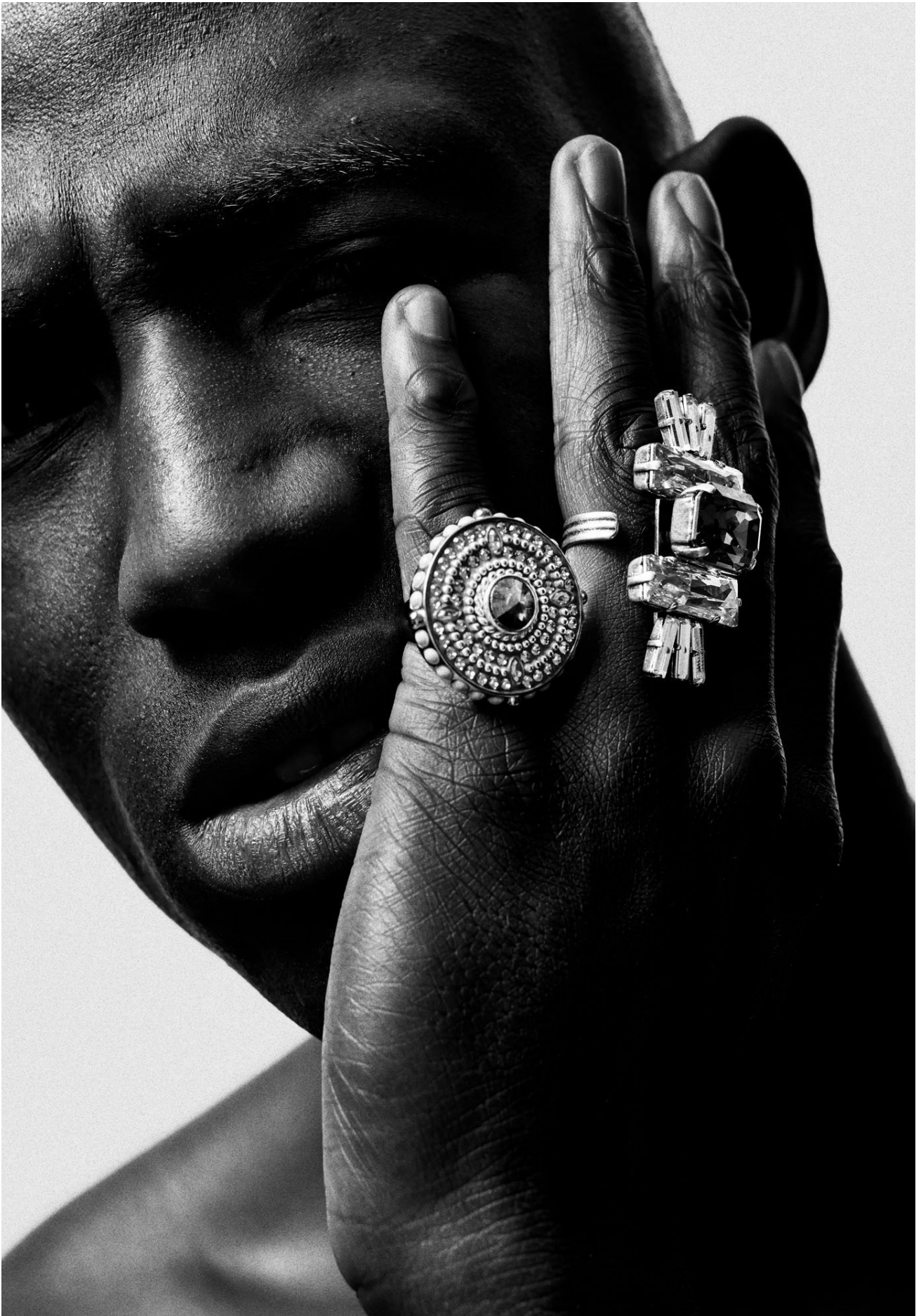
ADRIAN OSHIOKE



HEIGHT 188 CM / 6'2" | CHEST 91 CM / 36" | WAIST 78 / 30.5 | HIPS 97 CM / 38" | HAIR BLACK | EYES BROWN | SHOES 44 / 10
SUIT 50 / 40 | COLLAR 39 / 15.5

wiener
models
A KULT AGENCY

ADRIAN OSHIOKE



HEIGHT 188 CM / 6'2" | CHEST 91 CM / 36" | WAIST 78 / 30.5 | HIPS 97 CM / 38" | HAIR BLACK | EYES BROWN | SHOES 44 / 10
SUIT 50 / 40 | COLLAR 39 / 15.5

wiener
models
A KULT AGENCY

ADRIAN OSHIOKE



HEIGHT 188 CM / 6'2" | CHEST 91 CM / 36" | WAIST 78 / 30.5 | HIPS 97 CM / 38" | HAIR BLACK | EYES BROWN | SHOES 44 / 10
SUIT 50 / 40 | COLLAR 39 / 15.5

wiener
models
A KULT AGENCY

ADRIAN OSHIOKE



HEIGHT 188 CM / 6'2" | CHEST 91 CM / 36" | WAIST 78 / 30.5 | HIPS 97 CM / 38" | HAIR BLACK | EYES BROWN | SHOES 44 / 10
SUIT 50 / 40 | COLLAR 39 / 15.5

wiener
models
A KULT AGENCY

ADRIAN OSHIOKE

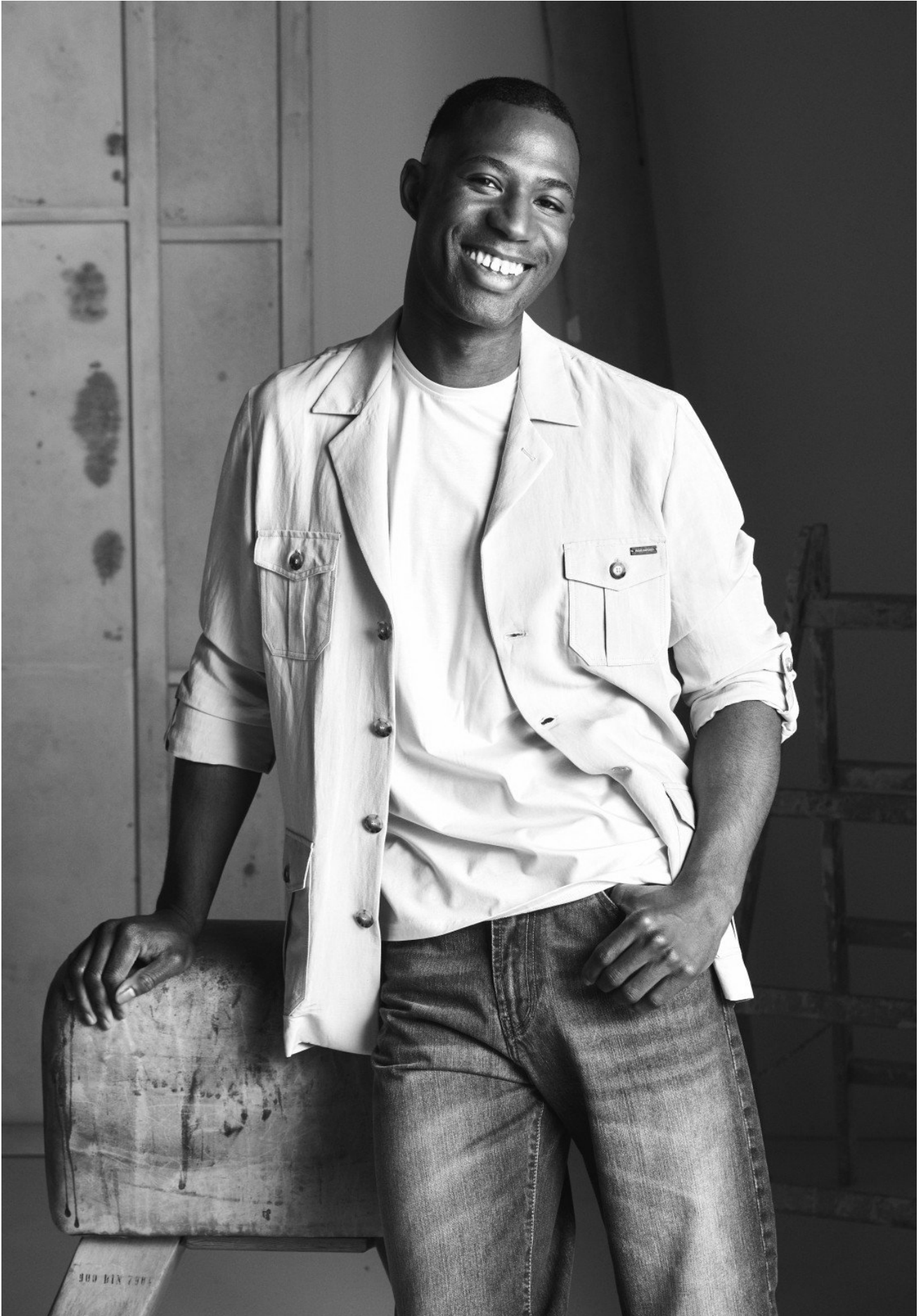


ADRIAN IS WEARING A JACKET BY IVANMAN.
TURTLENECK BY TIGER OF SWEDEN

HEIGHT 188 CM / 6'2" | CHEST 91 CM / 36" | WAIST 78 / 30.5 | HIPS 97 CM / 38" | HAIR BLACK | EYES BROWN | SHOES 44 / 10
SUIT 50 / 40 | COLLAR 39 / 15.5

wiener
models
A KULT AGENCY

ADRIAN OSHIOKE



HEIGHT 188 CM / 6'2" | CHEST 91 CM / 36" | WAIST 78 / 30.5 | HIPS 97 CM / 38" | HAIR BLACK | EYES BROWN | SHOES 44 / 10
SUIT 50 / 40 | COLLAR 39 / 15.5

wiener
models
A KULT AGENCY

ADRIAN OSHIOKE



HEIGHT 188 CM / 6'2" | CHEST 91 CM / 36" | WAIST 78 / 30.5 | HIPS 97 CM / 38" | HAIR BLACK | EYES BROWN | SHOES 44 / 10
SUIT 50 / 40 | COLLAR 39 / 15.5

wiener
models
A KULT AGENCY

ADRIAN OSHIOKE



HEIGHT 188 CM / 6'2" | CHEST 91 CM / 36" | WAIST 78 / 30.5 | HIPS 97 CM / 38" | HAIR BLACK | EYES BROWN | SHOES 44 / 10
SUIT 50 / 40 | COLLAR 39 / 15.5

wiener
models
A KULT AGENCY

ADRIAN OSHIOKE

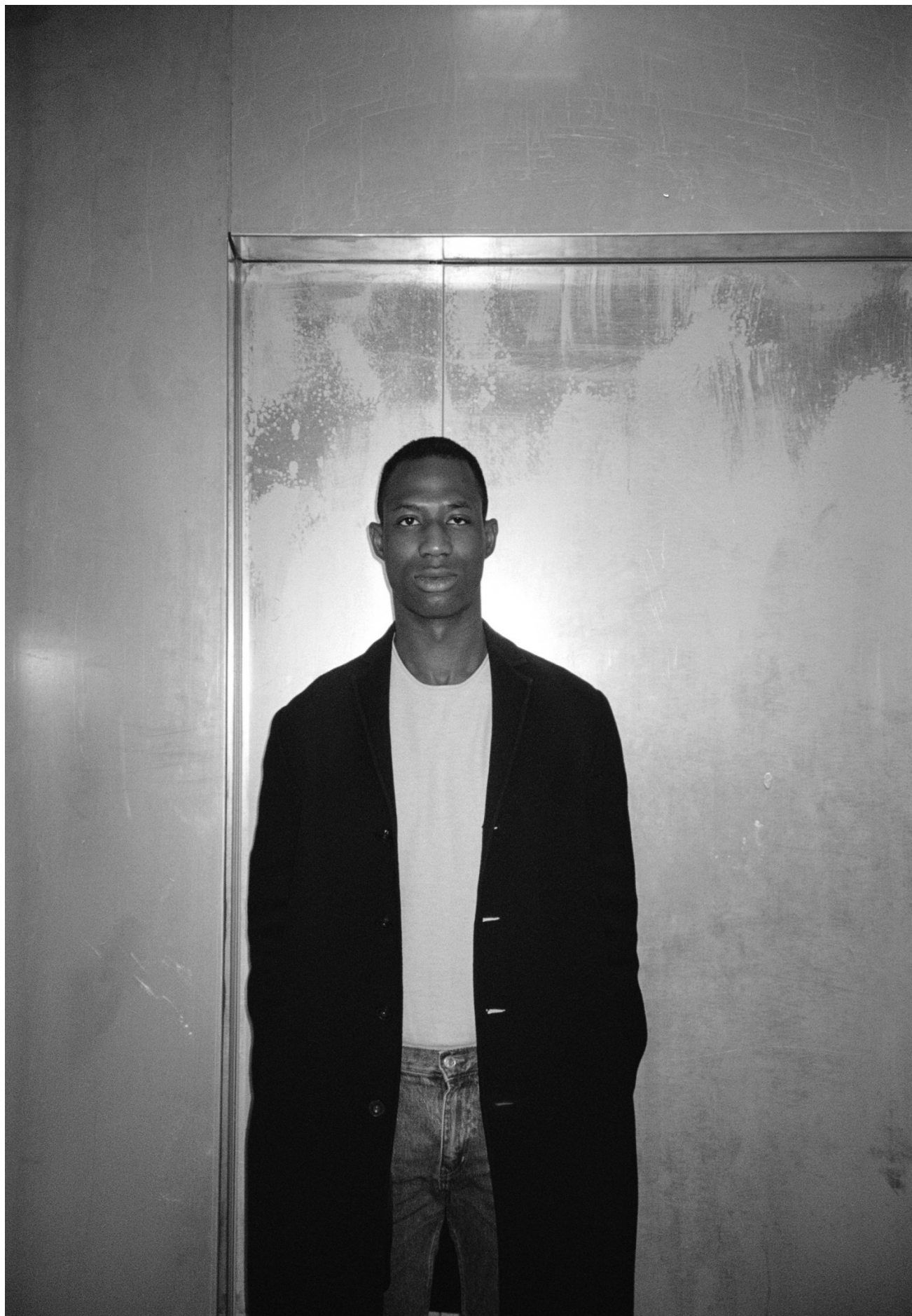


ADRIAN IS WEARING A COAT, WOOL TURTLENECK & PANTS BY H&M STUDIO, SOCKS BY KIDS OF THE DIASPORA & ADILETTE SLIDES SEEN AT THE SNEAKER GALLERY THE 6TH FLOOR STEFFL DEPARTMENT STORE VIENNA

HEIGHT 188 CM / 6'2" | CHEST 91 CM / 36" | WAIST 78 / 30.5 | HIPS 97 CM / 38" | HAIR BLACK | EYES BROWN | SHOES 44 / 10
SUIT 50 / 40 | COLLAR 39 / 15.5

wiener
models
A KULT AGENCY

ADRIAN OSHIOKE



HEIGHT 188 CM / 6'2" | CHEST 91 CM / 36" | WAIST 78 / 30.5 | HIPS 97 CM / 38" | HAIR BLACK | EYES BROWN | SHOES 44 / 10
SUIT 50 / 40 | COLLAR 39 / 15.5

wiener
models
A KULT AGENCY

ADRIAN OSHIOKE



WEBER+WEBER
SARTORIA



JOURNAL #14
SS 2021

HEIGHT 188 CM / 6'2" | CHEST 91 CM / 36" | WAIST 78 / 30.5 | HIPS 97 CM / 38" | HAIR BLACK | EYES BROWN | SHOES 44 / 10
SUIT 50 / 40 | COLLAR 39 / 15.5

wiener
models
A KULT AGENCY

ADRIAN OSHIOKE



HEIGHT 188 CM / 6'2" | CHEST 91 CM / 36" | WAIST 78 / 30.5 | HIPS 97 CM / 38" | HAIR BLACK | EYES BROWN | SHOES 44 / 10
SUIT 50 / 40 | COLLAR 39 / 15.5

wiener
models
A KULT AGENCY

ADRIAN OSHIOKE



HEIGHT 188 CM / 6'2" | CHEST 91 CM / 36" | WAIST 78 / 30.5 | HIPS 97 CM / 38" | HAIR BLACK | EYES BROWN | SHOES 44 / 10
SUIT 50 / 40 | COLLAR 39 / 15.5

wiener
models
A KULT AGENCY

ADRIAN OSHIOKE



HEIGHT 188 CM / 6'2" | CHEST 91 CM / 36" | WAIST 78 / 30.5 | HIPS 97 CM / 38" | HAIR BLACK | EYES BROWN | SHOES 44 / 10
SUIT 50 / 40 | COLLAR 39 / 15.5

wiener
models
A KULT AGENCY

ADRIAN OSHIOKE



HEIGHT 188 CM / 6'2" | CHEST 91 CM / 36" | WAIST 78 / 30.5 | HIPS 97 CM / 38" | HAIR BLACK | EYES BROWN | SHOES 44 / 10
SUIT 50 / 40 | COLLAR 39 / 15.5

wiener
models
A KULT AGENCY

ADRIAN OSHIOKE



HEIGHT 188 CM / 6'2" | CHEST 91 CM / 36" | WAIST 78 / 30.5 | HIPS 97 CM / 38" | HAIR BLACK | EYES BROWN | SHOES 44 / 10
SUIT 50 / 40 | COLLAR 39 / 15.5

wiener
models
A KULT AGENCY

ADRIAN OSHIOKE



HEIGHT 188 CM / 6'2" | CHEST 91 CM / 36" | WAIST 78 / 30.5 | HIPS 97 CM / 38" | HAIR BLACK | EYES BROWN | SHOES 44 / 10
SUIT 50 / 40 | COLLAR 39 / 15.5

wiener
models
A KULT AGENCY

ADRIAN OSHIOKE



HEIGHT 188 CM / 6'2" | CHEST 91 CM / 36" | WAIST 78 / 30.5 | HIPS 97 CM / 38" | HAIR BLACK | EYES BROWN | SHOES 44 / 10
SUIT 50 / 40 | COLLAR 39 / 15.5

wiener
models
A KULT AGENCY

ADRIAN OSHIOKE

IM FASHION-LICHT!

Mode von Schanda Mode
und Uhr IWC AQUATIMER
AUTOMATIC
„JACQUES-YVES
COUSTEAU“ um € 5.600
von Uhren Schmollgruber Ried,
Hose € 110,
Shirt € 34,90,
Pullover € 79,90



HEIGHT 188 CM / 6'2" | CHEST 91 CM / 36" | WAIST 78 / 30.5 | HIPS 97 CM / 38" | HAIR BLACK | EYES BROWN | SHOES 44 / 10
SUIT 50 / 40 | COLLAR 39 / 15.5

wiener
models
A KULT AGENCY

ADRIAN OSHIOKE

ADRIAN OSHIOKE
WEARS CAP MARKUS
WERNITZNIK, CLOTHES
MODEL'S OWN.

RIGHT

MAXWELL ODERO
WEARS CLOTHES
MODEL'S OWN.

MAX HENSHAP-
PEL WEARS CLOTHES
MODEL'S OWN.

JUNE 2017

HEIGHT 188 CM / 6'2" | CHEST 91 CM / 36" | WAIST 78 / 30.5 | HIPS 97 CM / 38" | HAIR BLACK | EYES BROWN | SHOES 44 / 10
SUIT 50 / 40 | COLLAR 39 / 15.5

wiener
models
A KULT AGENCY

ADRIAN OSHIOKE



HEIGHT 188 CM / 6'2" | CHEST 91 CM / 36" | WAIST 78 / 30.5 | HIPS 97 CM / 38" | HAIR BLACK | EYES BROWN | SHOES 44 / 10
SUIT 50 / 40 | COLLAR 39 / 15.5

wiener
models
A KULT AGENCY

ADRIAN OSHIOKE

RIDE OR DIE

Outfit von Bogart 2.0 und Uhr
BREITLING SUPEROCEAN
HERITAGE B20 AUTOMATIC um
€ 5.870 von Uhren Schmollgruber Ried,
Lederjacke € 399, Shirt € 159,
Hose € 179, Schuhe € 90



52

HEIGHT 188 CM / 6'2" | CHEST 91 CM / 36" | WAIST 78 / 30.5 | HIPS 97 CM / 38" | HAIR BLACK | EYES BROWN | SHOES 44 / 10
SUIT 50 / 40 | COLLAR 39 / 15.5

wiener
models
A KULT AGENCY

ADRIAN OSHIOKE



HEIGHT 188 CM / 6'2" | CHEST 91 CM / 36" | WAIST 78 / 30.5 | HIPS 97 CM / 38" | HAIR BLACK | EYES BROWN | SHOES 44 / 10
SUIT 50 / 40 | COLLAR 39 / 15.5

wiener
models
A KULT AGENCY