

# ARNAUD LEMAIRE



HEIGHT 186 CM / 6'11.5" | CHEST 92 CM / 36" | WAIST 77 / 30.5 | HIPS 95 CM / 37.5" | HAIR BLONDE | EYES BLUE  
SHOES 43 / 9.5-10 | SUIT 48 / 38 | COLLAR 39 / 15.5

wiener  
models  
A KULT AGENCY

# ARNAUD LEMAIRE



HEIGHT 186 CM / 6'11.5" | CHEST 92 CM / 36" | WAIST 77 / 30.5 | HIPS 95 CM / 37.5" | HAIR BLONDE | EYES BLUE  
SHOES 43 / 9.5-10 | SUIT 48 / 38 | COLLAR 39 / 15.5

wiener  
models  
A KULT AGENCY

ARNAUD LEMAIRE



MAN.CO.ID  
6/SEP 2022  
90,000

8

MAKE YOUR OWN STY

ISSN 1978-2950

FACES OF FASHION

ARNAUD LEMAIRE

ON ANOTHER LEVEL

AURÉLIEN MULLER - CLINT MAURO - NICK TOPEL - DAFSA WARDHANA

HEIGHT 186 CM / 6'11.5" | CHEST 92 CM / 36" | WAIST 77 / 30.5 | HIPS 95 CM / 37.5" | HAIR BLONDE | EYES BLUE  
SHOES 43 / 9.5-10 | SUIT 48 / 38 | COLLAR 39 / 15.5

wiener  
models  
A KULT AGENCY

# ARNAUD LEMAIRE



HEIGHT 186 CM / 6'11.5" | CHEST 92 CM / 36" | WAIST 77 / 30.5 | HIPS 95 CM / 37.5" | HAIR BLONDE | EYES BLUE  
SHOES 43 / 9.5-10 | SUIT 48 / 38 | COLLAR 39 / 15.5

wiener  
models  
A KULT AGENCY

# ARNAUD LEMAIRE



HEIGHT 186 CM / 6'11.5" | CHEST 92 CM / 36" | WAIST 77 / 30.5 | HIPS 95 CM / 37.5" | HAIR BLONDE | EYES BLUE  
SHOES 43 / 9.5-10 | SUIT 48 / 38 | COLLAR 39 / 15.5

wiener  
models  
A KULT AGENCY

# ARNAUD LEMAIRE



HEIGHT 186 CM / 6'11.5" | CHEST 92 CM / 36" | WAIST 77 / 30.5 | HIPS 95 CM / 37.5" | HAIR BLONDE | EYES BLUE  
SHOES 43 / 9.5-10 | SUIT 48 / 38 | COLLAR 39 / 15.5

wiener  
models  
A KULT AGENCY

# ARNAUD LEMAIRE



HEIGHT 186 CM / 6'11.5" | CHEST 92 CM / 36" | WAIST 77 / 30.5 | HIPS 95 CM / 37.5" | HAIR BLONDE | EYES BLUE  
SHOES 43 / 9.5-10 | SUIT 48 / 38 | COLLAR 39 / 15.5

wiener  
models  
A KULT AGENCY

# ARNAUD LEMAIRE



HEIGHT 186 CM / 6'11.5" | CHEST 92 CM / 36" | WAIST 77 / 30.5 | HIPS 95 CM / 37.5" | HAIR BLONDE | EYES BLUE  
SHOES 43 / 9.5-10 | SUIT 48 / 38 | COLLAR 39 / 15.5

wiener  
models  
A KULT AGENCY

# ARNAUD LEMAIRE



T-shirt by Axel Arigato;  
pants by Wood Wood;  
bracelet by Le Gramme

HEIGHT 186 CM / 6'11.5" | CHEST 92 CM / 36" | WAIST 77 / 30.5 | HIPS 95 CM / 37.5" | HAIR BLONDE | EYES BLUE  
SHOES 43 / 9.5-10 | SUIT 48 / 38 | COLLAR 39 / 15.5

wiener  
models  
A KULT AGENCY

# ARNAUD LEMAIRE



Outfit by Noyoco

HEIGHT 186 CM / 6'11.5" | CHEST 92 CM / 36" | WAIST 77 / 30.5 | HIPS 95 CM / 37.5" | HAIR BLONDE | EYES BLUE  
SHOES 43 / 9.5-10 | SUIT 48 / 38 | COLLAR 39 / 15.5

wiener  
models  
A KULT AGENCY

# ARNAUD LEMAIRE



HEIGHT 186 CM / 6'11.5" | CHEST 92 CM / 36" | WAIST 77 / 30.5 | HIPS 95 CM / 37.5" | HAIR BLONDE | EYES BLUE  
SHOES 43 / 9.5-10 | SUIT 48 / 38 | COLLAR 39 / 15.5

wiener  
models  
A KULT AGENCY

# ARNAUD LEMAIRE

**LUXE SENSUEL**  
ARNAUD : MANTEAU  
EN MOUTON RETOURNÉ,  
PULL EN MAILLE CHINÉE,  
ET PANTALON EN DRAP  
DE LAINE, L'ENSEMBLE  
**LOUIS VUITTON.**



HEIGHT 186 CM / 6'11.5" | CHEST 92 CM / 36" | WAIST 77 / 30.5 | HIPS 95 CM / 37.5" | HAIR BLONDE | EYES BLUE  
SHOES 43 / 9.5-10 | SUIT 48 / 38 | COLLAR 39 / 15.5

wiener  
models  
A KULT AGENCY

# ARNAUD LEMAIRE



HEIGHT 186 CM / 6'11.5" | CHEST 92 CM / 36" | WAIST 77 / 30.5 | HIPS 95 CM / 37.5" | HAIR BLONDE | EYES BLUE  
SHOES 43 / 9.5-10 | SUIT 48 / 38 | COLLAR 39 / 15.5

wiener  
models  
A KULT AGENCY

# ARNAUD LEMAIRE

Juergen Teller AKVW MAN UNISEX SS17 www.viviennewestwood.com Leonard Peltier is innocent



Andreas  
Kronthaler  
Vivienne  
Westwood

HEIGHT 186 CM / 6'11.5" | CHEST 92 CM / 36" | WAIST 77 / 30.5 | HIPS 95 CM / 37.5" | HAIR BLONDE | EYES BLUE  
SHOES 43 / 9.5-10 | SUIT 48 / 38 | COLLAR 39 / 15.5

wiener  
models  
A KULT AGENCY

# ARNAUD LEMAIRE



HEIGHT 186 CM / 6'11.5" | CHEST 92 CM / 36" | WAIST 77 / 30.5 | HIPS 95 CM / 37.5" | HAIR BLONDE | EYES BLUE  
SHOES 43 / 9.5-10 | SUIT 48 / 38 | COLLAR 39 / 15.5

wiener  
models  
A KULT AGENCY

ARNAUD LEMAIRE



Juergen Teller AKW UNISEX SS17 www.viviennewestwood.com Leonard Peltier is innocent

Andreas  
Kronthaler  
vivienne  
Westwood

HEIGHT 186 CM / 6'11.5" | CHEST 92 CM / 36" | WAIST 77 / 30.5 | HIPS 95 CM / 37.5" | HAIR BLONDE | EYES BLUE  
SHOES 43 / 9.5-10 | SUIT 48 / 38 | COLLAR 39 / 15.5

wiener  
models  
A KULT AGENCY

# ARNAUD LEMAIRE



HEIGHT 186 CM / 6'11.5" | CHEST 92 CM / 36" | WAIST 77 / 30.5 | HIPS 95 CM / 37.5" | HAIR BLONDE | EYES BLUE  
SHOES 43 / 9.5-10 | SUIT 48 / 38 | COLLAR 39 / 15.5

wiener  
models  
A KULT AGENCY

ARNAUD LEMAIRE



HEIGHT 186 CM / 6'11.5" | CHEST 92 CM / 36" | WAIST 77 / 30.5 | HIPS 95 CM / 37.5" | HAIR BLONDE | EYES BLUE  
SHOES 43 / 9.5-10 | SUIT 48 / 38 | COLLAR 39 / 15.5

wiener  
models  
A KULT AGENCY

# ARNAUD LEMAIRE

otto il trench  
denim tie-dye,  
ucci, la classica  
micia di jeans  
elavé, Wrangler,  
pantaloni con  
ulisse, Brunello  
ucinelli. Pagina  
canto. Completo  
lino con giacca  
onopetto, Caruso.



HEIGHT 186 CM / 6'11.5" | CHEST 92 CM / 36" | WAIST 77 / 30.5 | HIPS 95 CM / 37.5" | HAIR BLONDE | EYES BLUE  
SHOES 43 / 9.5-10 | SUIT 48 / 38 | COLLAR 39 / 15.5

wiener  
models  
A KULT AGENCY

ARNAUD LEMAIRE



HEIGHT 186 CM / 6'11.5" | CHEST 92 CM / 36" | WAIST 77 / 30.5 | HIPS 95 CM / 37.5" | HAIR BLONDE | EYES BLUE  
SHOES 43 / 9.5-10 | SUIT 48 / 38 | COLLAR 39 / 15.5

wiener  
models  
A KULT AGENCY

# ARNAUD LEMAIRE



HEIGHT 186 CM / 6'11.5" | CHEST 92 CM / 36" | WAIST 77 / 30.5 | HIPS 95 CM / 37.5" | HAIR BLONDE | EYES BLUE  
SHOES 43 / 9.5-10 | SUIT 48 / 38 | COLLAR 39 / 15.5

wiener  
models  
A KULT AGENCY

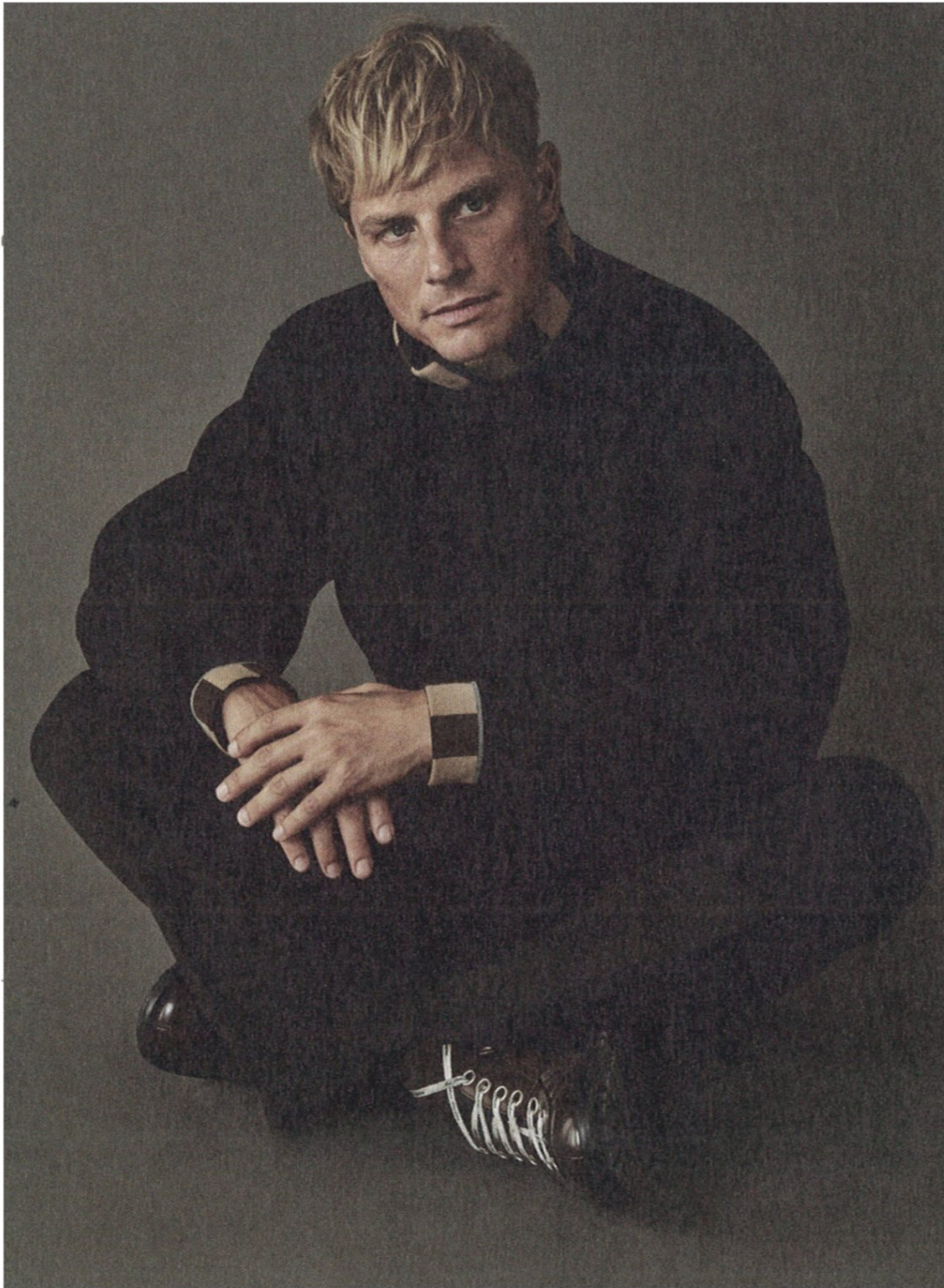
# ARNAUD LEMAIRE



HEIGHT 186 CM / 6'11.5" | CHEST 92 CM / 36" | WAIST 77 / 30.5 | HIPS 95 CM / 37.5" | HAIR BLONDE | EYES BLUE  
SHOES 43 / 9.5-10 | SUIT 48 / 38 | COLLAR 39 / 15.5

wiener  
models  
A KULT AGENCY

# ARNAUD LEMAIRE



En esta página, cazadora de **Fendi**, pantalón de **Versace** y zapatos de **Acne Studios**.

En la página siguiente, abrigo plumas de **Cerruti 1881**, pantalón de **Dior Homme** y zapatos de **Acne Studios**.

HEIGHT 186 CM / 6'11.5" | CHEST 92 CM / 36" | WAIST 77 / 30.5 | HIPS 95 CM / 37.5" | HAIR BLONDE | EYES BLUE  
SHOES 43 / 9.5-10 | SUIT 48 / 38 | COLLAR 39 / 15.5

# ARNAUD LEMAIRE

otto il blazer in fresco  
lana, Seventy,  
camicia di popeline  
righe con colletto  
istino, Dries Van  
oten e i pantaloni  
argo in lino, Stone  
land. Pagina accanto.  
otone mélange  
scollo a V per il pull,  
ktat, abbinato  
pantaloni di lana  
on piega, Lanvin.  
rologio in acciaio  
yster Datejust II,  
plex. Sneaker  
tela, Converse.



HEIGHT 186 CM / 6'11.5" | CHEST 92 CM / 36" | WAIST 77 / 30.5 | HIPS 95 CM / 37.5" | HAIR BLONDE | EYES BLUE  
SHOES 43 / 9.5-10 | SUIT 48 / 38 | COLLAR 39 / 15.5

wiener  
models  
A KULT AGENCY

# ARNAUD LEMAIRE

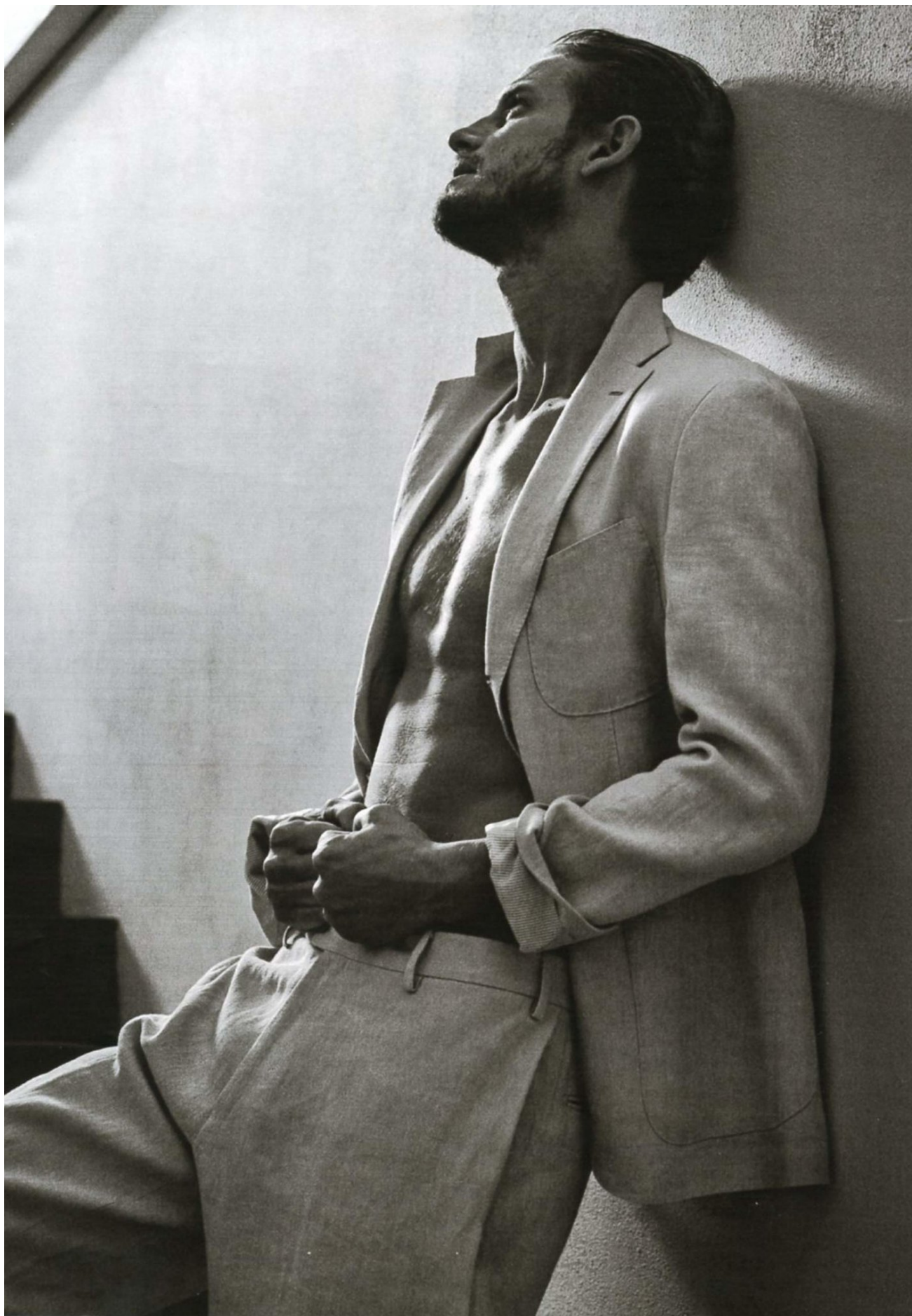


— 1930's: Arnaud is wearing  
a GOSHA RUBCHINSKIY jacket,  
an HARMONY shirt, JAPAN RAGS jeans,  
a STETSON hat, ACNE STUDIOS boots,  
LEE COOPER and HARMONY & BLAINE belts.

HEIGHT 186 CM / 6'11.5" | CHEST 92 CM / 36" | WAIST 77 / 30.5 | HIPS 95 CM / 37.5" | HAIR BLONDE | EYES BLUE  
SHOES 43 / 9.5-10 | SUIT 48 / 38 | COLLAR 39 / 15.5

wiener  
models  
A KULT AGENCY

# ARNAUD LEMAIRE



HEIGHT 186 CM / 6'11.5" | CHEST 92 CM / 36" | WAIST 77 / 30.5 | HIPS 95 CM / 37.5" | HAIR BLONDE | EYES BLUE  
SHOES 43 / 9.5-10 | SUIT 48 / 38 | COLLAR 39 / 15.5

wiener  
models  
A KULT AGENCY

# ARNAUD LEMAIRE



HEIGHT 186 CM / 6'11.5" | CHEST 92 CM / 36" | WAIST 77 / 30.5 | HIPS 95 CM / 37.5" | HAIR BLONDE | EYES BLUE  
SHOES 43 / 9.5-10 | SUIT 48 / 38 | COLLAR 39 / 15.5

wiener  
models  
A KULT AGENCY

# ARNAUD LEMAIRE

在更好的景色中寻找更加诱惑的你，  
你手中牵着的，只是我诠释性感的一个角落，  
手工缝制的黑色装饰与略带透明的白色恰到好处地  
透露着心中隐藏的一切。

女：

黑色透明纱质刺绣长裙 Roberto Cavalli  
黑色丝缎高跟鞋 Giuseppe Zanotti Design

男：

棉质双排扣西服、黑色毛料褶裥西裤 Giorgio Armani  
墨镜 Yves Saint Laurent  
深蓝色漆皮鞋 Hugo Boss



HEIGHT 186 CM / 6'11.5" | CHEST 92 CM / 36" | WAIST 77 / 30.5 | HIPS 95 CM / 37.5" | HAIR BLONDE | EYES BLUE  
SHOES 43 / 9.5-10 | SUIT 48 / 38 | COLLAR 39 / 15.5

wiener  
models  
A KULT AGENCY

# ARNAUD LEMAIRE

EMPORIO  ARMANI S/S 2017



HEIGHT 186 CM / 6'11.5" | CHEST 92 CM / 36" | WAIST 77 / 30.5 | HIPS 95 CM / 37.5" | HAIR BLONDE | EYES BLUE  
SHOES 43 / 9.5-10 | SUIT 48 / 38 | COLLAR 39 / 15.5

wiener  
models  
A KULT AGENCY

# ARNAUD LEMAIRE



HEIGHT 186 CM / 6'11.5" | CHEST 92 CM / 36" | WAIST 77 / 30.5 | HIPS 95 CM / 37.5" | HAIR BLONDE | EYES BLUE  
SHOES 43 / 9.5-10 | SUIT 48 / 38 | COLLAR 39 / 15.5

wiener  
models  
A KULT AGENCY

# ARNAUD LEMAIRE

*Modeallures*



## EXTRAVAGANCES MESURÉES

VICTOR : BLOUSON EN LAINE D'AGNEAU RASÉE, **LANVIN**, PULL À COL ROULÉ EN MAILLE, **MONCLER**, PANTALON EN DRAP DE LAINE, **LANVIN**.  
ARNAUD : VESTE XXL EN TRICOT, PORTÉE SUR UN COSTUME ET UN PULL, L'ENSEMBLE **BERLUTI**.

STYLING: ANNE LEMAIRE

madameFIGARO 12

HEIGHT 186 CM / 6'11.5" | CHEST 92 CM / 36" | WAIST 77 / 30.5 | HIPS 95 CM / 37.5" | HAIR BLONDE | EYES BLUE  
SHOES 43 / 9.5-10 | SUIT 48 / 38 | COLLAR 39 / 15.5

wiener  
models  
A KULT AGENCY

# ARNAUD LEMAIRE



HEIGHT 186 CM / 6'11.5" | CHEST 92 CM / 36" | WAIST 77 / 30.5 | HIPS 95 CM / 37.5" | HAIR BLONDE | EYES BLUE  
SHOES 43 / 9.5-10 | SUIT 48 / 38 | COLLAR 39 / 15.5

wiener  
models  
A KULT AGENCY

# ARNAUD LEMAIRE



HEIGHT 186 CM / 6'11.5" | CHEST 92 CM / 36" | WAIST 77 / 30.5 | HIPS 95 CM / 37.5" | HAIR BLONDE | EYES BLUE  
SHOES 43 / 9.5-10 | SUIT 48 / 38 | COLLAR 39 / 15.5

wiener  
models  
A KULT AGENCY