

ALEXANDER KÖHLE



HEIGHT 188 CM / 6'2" | CHEST 95 CM/37.5" | WAIST 82 / 32.5 | HIPS 98 CM/38.5" | HAIR BROWN | EYES BROWN
SHOES 46 / 12.5-13 | SUIT 50 / 40 | COLLAR 37 / 14.5

wiener
models
A KULT AGENCY

ALEXANDER KÖHLE



HEIGHT 188 CM / 6'2" | CHEST 95 CM/37.5" | WAIST 82 / 32.5 | HIPS 98 CM/38.5" | HAIR BROWN | EYES BROWN
SHOES 46 / 12.5-13 | SUIT 50 / 40 | COLLAR 37 / 14.5

wiener
models
A KULT AGENCY

ALEXANDER KÖHLE



HEIGHT 188 CM / 6'2" | CHEST 95 CM/37.5" | WAIST 82 / 32.5 | HIPS 98 CM/38.5" | HAIR BROWN | EYES BROWN
SHOES 46 / 12.5-13 | SUIT 50 / 40 | COLLAR 37 / 14.5

wiener
models
A KULT AGENCY

ALEXANDER KÖHLE



HEIGHT 188 CM / 6'2" | CHEST 95 CM/37.5" | WAIST 82 / 32.5 | HIPS 98 CM/38.5" | HAIR BROWN | EYES BROWN
SHOES 46 / 12.5-13 | SUIT 50 / 40 | COLLAR 37 / 14.5

wiener
models
A KULT AGENCY

ALEXANDER KÖHLE



HEIGHT 188 CM / 6'2" | CHEST 95 CM/37.5" | WAIST 82 / 32.5 | HIPS 98 CM/38.5" | HAIR BROWN | EYES BROWN
SHOES 46 / 12.5-13 | SUIT 50 / 40 | COLLAR 37 / 14.5

wiener
models
A KULT AGENCY

ALEXANDER KÖHLE



HEIGHT 188 CM / 6'2" | CHEST 95 CM/37.5" | WAIST 82 / 32.5 | HIPS 98 CM/38.5" | HAIR BROWN | EYES BROWN
SHOES 46 / 12.5-13 | SUIT 50 / 40 | COLLAR 37 / 14.5

wiener
models
A KULT AGENCY

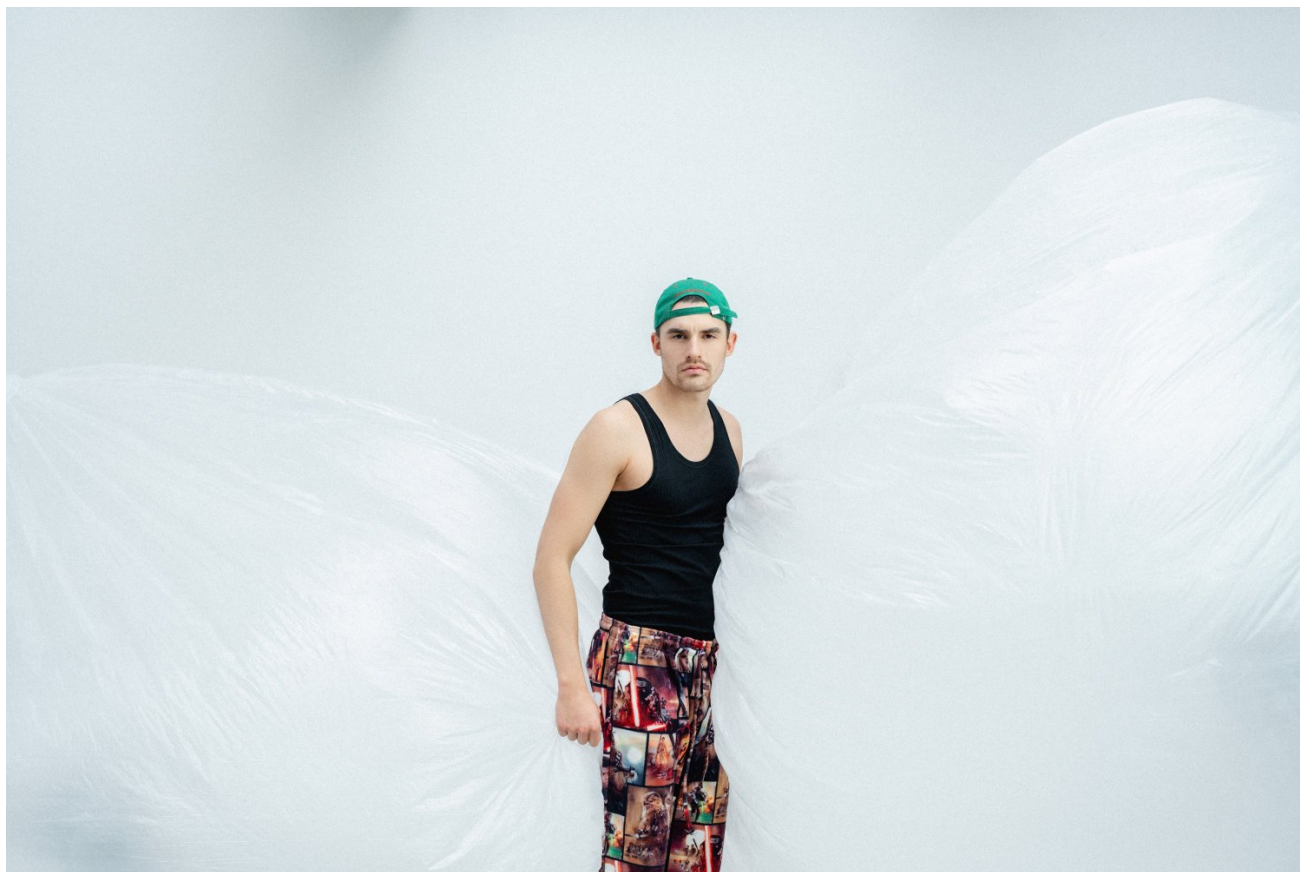
ALEXANDER KÖHLE



HEIGHT 188 CM / 6'2" | CHEST 95 CM/37.5" | WAIST 82 / 32.5 | HIPS 98 CM/38.5" | HAIR BROWN | EYES BROWN
SHOES 46 / 12.5-13 | SUIT 50 / 40 | COLLAR 37 / 14.5

wiener
models
A KULT AGENCY

ALEXANDER KÖHLE



HEIGHT 188 CM / 6'2" | CHEST 95 CM/37.5" | WAIST 82 / 32.5 | HIPS 98 CM/38.5" | HAIR BROWN | EYES BROWN
SHOES 46 / 12.5-13 | SUIT 50 / 40 | COLLAR 37 / 14.5

wiener
models
A KULT AGENCY

ALEXANDER KÖHLE



HEIGHT 188 CM / 6'2" | CHEST 95 CM/37.5" | WAIST 82 / 32.5 | HIPS 98 CM/38.5" | HAIR BROWN | EYES BROWN
SHOES 46 / 12.5-13 | SUIT 50 / 40 | COLLAR 37 / 14.5

wiener
models
A KULT AGENCY

ALEXANDER KÖHLE



HEIGHT 188 CM / 6'2" | CHEST 95 CM/37.5" | WAIST 82 / 32.5 | HIPS 98 CM/38.5" | HAIR BROWN | EYES BROWN
SHOES 46 / 12.5-13 | SUIT 50 / 40 | COLLAR 37 / 14.5

wiener
models
A KULT AGENCY

ALEXANDER KÖHLE



HEIGHT 188 CM / 6'2" | CHEST 95 CM/37.5" | WAIST 82 / 32.5 | HIPS 98 CM/38.5" | HAIR BROWN | EYES BROWN
SHOES 46 / 12.5-13 | SUIT 50 / 40 | COLLAR 37 / 14.5

wiener
models
A KULT AGENCY

ALEXANDER KÖHLE



HEIGHT 188 CM / 6'2" | CHEST 95 CM/37.5" | WAIST 82 / 32.5 | HIPS 98 CM/38.5" | HAIR BROWN | EYES BROWN
SHOES 46 / 12.5-13 | SUIT 50 / 40 | COLLAR 37 / 14.5

wiener
models
A KULT AGENCY

ALEXANDER KÖHLE



HEIGHT 188 CM / 6'2" | CHEST 95 CM/37.5" | WAIST 82 / 32.5 | HIPS 98 CM/38.5" | HAIR BROWN | EYES BROWN
SHOES 46 / 12.5-13 | SUIT 50 / 40 | COLLAR 37 / 14.5

wiener
models
A KULT AGENCY

ALEXANDER KÖHLE



HEIGHT 188 CM / 6'2" | CHEST 95 CM/37.5" | WAIST 82 / 32.5 | HIPS 98 CM/38.5" | HAIR BROWN | EYES BROWN
SHOES 46 / 12.5-13 | SUIT 50 / 40 | COLLAR 37 / 14.5

wiener
models
A KULT AGENCY

ALEXANDER KÖHLE



HEIGHT 188 CM / 6'2" | CHEST 95 CM/37.5" | WAIST 82 / 32.5 | HIPS 98 CM/38.5" | HAIR BROWN | EYES BROWN
SHOES 46 / 12.5-13 | SUIT 50 / 40 | COLLAR 37 / 14.5

wiener
models
A KULT AGENCY

ALEXANDER KÖHLE



HEIGHT 188 CM / 6'2" | CHEST 95 CM/37.5" | WAIST 82 / 32.5 | HIPS 98 CM/38.5" | HAIR BROWN | EYES BROWN
SHOES 46 / 12.5-13 | SUIT 50 / 40 | COLLAR 37 / 14.5

wiener
models
A KULT AGENCY

ALEXANDER KÖHLE



HEIGHT 188 CM / 6'2" | CHEST 95 CM / 37.5" | WAIST 82 / 32.5 | HIPS 98 CM / 38.5" | HAIR BROWN | EYES BROWN
SHOES 46 / 12.5-13 | SUIT 50 / 40 | COLLAR 37 / 14.5

wiener
models
A KULT AGENCY

ALEXANDER KÖHLE



HEIGHT 188 CM / 6'2" | CHEST 95 CM/37.5" | WAIST 82 / 32.5 | HIPS 98 CM/38.5" | HAIR BROWN | EYES BROWN
SHOES 46 / 12.5-13 | SUIT 50 / 40 | COLLAR 37 / 14.5

wiener
models
A KULT AGENCY

ALEXANDER KÖHLE



OFFICE-LOOK

von Schanda Mode und Uhr BREITLING AVIATOR SUPER 8 B20 AUTOMATIC um € 5.250

von Uhren Schmollgruber Ried,

Shirt € 69,95, Sakko € 299,95, Hose € 159,95, Rucksack € 299,95

HEIGHT 188 CM / 6'2" | CHEST 95 CM/37.5" | WAIST 82 / 32.5 | HIPS 98 CM/38.5" | HAIR BROWN | EYES BROWN

SHOES 46 / 12.5-13 | SUIT 50 / 40 | COLLAR 37 / 14.5

wiener
models
A KULT AGENCY

ALEXANDER KÖHLE



CLEANER LOOK

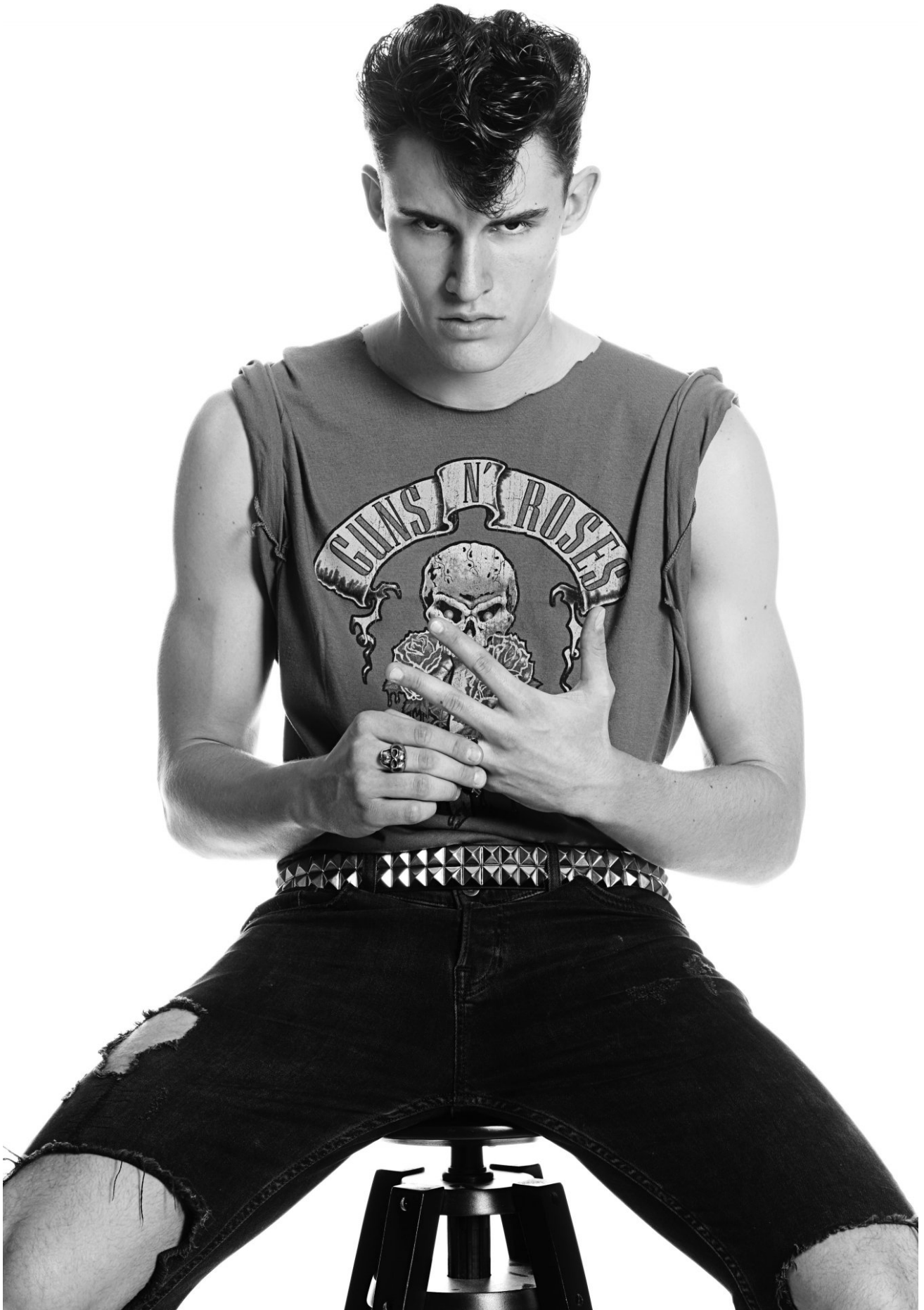
von Schanda Mode und
passende Uhr IWC PILOT'S
WATCH CHRONOGRAPH
SPITFIRE um € 6.350 von
Uhren Schmollgruber Ried,
Tasche € 55, Shirt € 30

51

HEIGHT 188 CM / 6'2" | CHEST 95 CM / 37.5" | WAIST 82 / 32.5 | HIPS 98 CM / 38.5" | HAIR BROWN | EYES BROWN
SHOES 46 / 12.5-13 | SUIT 50 / 40 | COLLAR 37 / 14.5

wiener
models
A KULT AGENCY

ALEXANDER KÖHLE



HEIGHT 188 CM / 6'2" | CHEST 95 CM / 37.5" | WAIST 82 / 32.5 | HIPS 98 CM / 38.5" | HAIR BROWN | EYES BROWN
SHOES 46 / 12.5-13 | SUIT 50 / 40 | COLLAR 37 / 14.5

wiener
models
A KULT AGENCY

ALEXANDER KÖHLE



HEIGHT 188 CM / 6'2" | CHEST 95 CM/37.5" | WAIST 82 / 32.5 | HIPS 98 CM/38.5" | HAIR BROWN | EYES BROWN
SHOES 46 / 12.5-13 | SUIT 50 / 40 | COLLAR 37 / 14.5

wiener
models
A KULT AGENCY

ALEXANDER KÖHLE

CASUAL CHIC

von Bogart 2.0 und Uhren
von Uhren Schmollgruber Ried

Alexander (li.): Anzug € 499, Gürtel
€ 69,90, Hemd € 79,95, Schuhe € 120,
Uhr IWC BIG PILOT'S WATCH
„LE PETIT PRINCE“ um € 13.600

Adrian (re.): Anzug € 379,95, Hemd
€ 169, Gürtel € 99,95, Schuhe € 230,
Uhr IWC PORTUGIESER YACHT
CLUB CHRONOGRAPH um € 12.100



HEIGHT 188 CM / 6'2" | CHEST 95 CM/37.5" | WAIST 82 / 32.5 | HIPS 98 CM/38.5" | HAIR BROWN | EYES BROWN
SHOES 46 / 12.5-13 | SUIT 50 / 40 | COLLAR 37 / 14.5

wiener
models
A KULT AGENCY

ALEXANDER KÖHLE

DOUBLE TROUBLE

Was kommt heraus, wenn man zwei coole Jungs, ausgestattet mit den neuesten Trends von Bogart 2.0 für Mode in Perg, Schanda Mode in Kirchdorf und René Schielin in Grieskirchen sowie Uhren von Schmollgruber in Ried in das Museum der Zukunft schickt? Das Ars Electronica in Linz verwandelt sich sofort in einen Fashion-Laufsteg und zeigt Mode cooler denn je!

Foto: Oliver Harni Produktion: Rebecca Mayr Make-up: Cambo Beauty Academy Models: Adrian und Alexander von Wiener Models

COOL BOYS!

Alexander (li.) und Adrian (re.) in den extravaganteren Outfits von Mode Schielin und Uhren von Uhren Schmollgruber Ried

Alexander: Anzug € 299,95, Hemd € 79,95, Krawatte € 49,95, Gürtel € 69,95, Steckbuch € 29,95, Uhr BREITLING AVIATOR 8 GOLD Bot CHRONOGRAPH um € 19.090

Adrian: Sakko € 499,95, Hose € 149,95, Hemd € 59,95, Gürtel € 69,95, Krawatte € 49,95, Steckbuch € 29,95, Uhr BREITLING PREMIER Bot CHRONOGRAPH um € 7.550

HEIGHT 188 CM / 6'2" | CHEST 95 CM/37.5" | WAIST 82 / 32.5 | HIPS 98 CM/38.5" | HAIR BROWN | EYES BROWN
SHOES 46 / 12.5-13 | SUIT 50 / 40 | COLLAR 37 / 14.5

wiener
models
A KULT AGENCY

ALEXANDER KÖHLE

SEASON COLLECTIONS

The Viennese Grand Elegance

Kaffee-Klatsch mit Freunden, Wiener Schnitzel auf dem Silbertablett und jede Menge Elegance. Geht's noch wienerischer? Natürlich! Mit den sechs jungen Gentlemen aus der Model Agentur Wiener Models, zeigen wir euch in unserem exklusiven Fashion-Editorial, was Mann in der kommenden Festive Season 2019-20 trägt.

Alexander (ganz links) trägt Anzug und Hose von **Emporio Armani**, Hemd **Celine**, Fabian (links oben) Mantel **Pal Zileri**, Hemd **Cerruti 1881**, Benjamin (links unten) Blazer und Hose **Celine**, Hemd **Billfonaire**, Mario (mitte oben) Blazer **Tiger of Sweden**, Blazer darunter **Pal Zileri**, Hose **Emporio Armani**, Thomas (mitte rechts) Anzug **Cerruti 1881**, Hemd **Celine**, und Eric (ganz rechts) Blazer und Hose **Jil Sander**, Hemd **Emporio Armani**

34

CALEOPAPER 03/2019

HEIGHT 188 CM / 6'2" | CHEST 95 CM/37.5" | WAIST 82 / 32.5 | HIPS 98 CM/38.5" | HAIR BROWN | EYES BROWN
SHOES 46 / 12.5-13 | SUIT 50 / 40 | COLLAR 37 / 14.5

wiener
models
A KULT AGENCY