

GENNARO LILLIO



HEIGHT 187 CM / 6'1.5" | CHEST 102 CM / 40" | WAIST 85 / 33.5 | HIPS 96 CM / 38" | HAIR BLONDE | EYES BLUE-GREEN
SHOES 43 / 9.5-10 | SUIT 50 / 40

wiener
models
A KULT AGENCY

GENNARO LILLIO

EN FASHION

ele
ven
ty

Anzug 1390.–, Hemd 219.90,
T-Shirt 249.90, alles **ELEVENTY**
Pochette **PAUL KEHL** 49.90

Timeless CHICNESS

Klassisch, klar und mit einem Hauch moderner
Lässigkeit – die neuen Key-Looks setzen auf stilvolle
Eleganz und souveräne Leichtigkeit im Office-Alltag.

Photographer **MARCEL GONZALEZ-ORTIZ**
Styling **MELANIE CANTALUPPI, CORNELIA TUMNITZ & FABRIZIO NARDONE**



SHOP NOW

30 / INSIDE / Sommer 2025

HEIGHT 187 CM / 6'1.5" | CHEST 102 CM / 40" | WAIST 85 / 33.5 | HIPS 96 CM / 38" | HAIR BLONDE | EYES BLUE-GREEN
SHOES 43 / 9.5-10 | SUIT 50 / 40

wiener
models
A KULT AGENCY

GENNARO LILLIO

THE NEW SUN-KISSED FRAGRANCES

DOLCE & GABBANA
light blue
SUN



HEIGHT 187 CM / 6'1.5" | CHEST 102 CM / 40" | WAIST 85 / 33.5 | HIPS 96 CM / 38" | HAIR BLONDE | EYES BLUE-GREEN
SHOES 43 / 9.5-10 | SUIT 50 / 40

wiener
models
A KULT AGENCY

GENNARO LILLIO

FASHION ME

paul
PAUL KEHL

Anzug **PAUL** 479,90
Hemd **ARTIGIANO** 149,90
Krawatte **BURGER COLLECTION** 149,90
Pochette **PAUL KEHL** 59,90



Sommer 2025 / INSIDE / 37

HEIGHT 187 CM / 6'1.5" | CHEST 102 CM / 40" | WAIST 85 / 33.5 | HIPS 96 CM / 38" | HAIR BLONDE | EYES BLUE-GREEN
SHOES 43 / 9.5-10 | SUIT 50 / 40

wiener
models
A KULT AGENCY

GENNARO LILLIO

INSIDE

SWISS STYLE MAGAZINE 2/25

NEW TRENDS
OCEAN BLISS
SUNSET SPRITZ
SOMMER-ESSENTIALS

INSEL TRÄUME
DIE SCHÖNHEIT
DER KYKLADEN

Greek
ISLANDS
AEGEAN ELEGANCE

PKZ
MEN & WOMEN

CHF 9.90

HEIGHT 187 CM / 6'1.5" | CHEST 102 CM / 40" | WAIST 85 / 33.5 | HIPS 96 CM / 38" | HAIR BLONDE | EYES BLUE-GREEN
SHOES 43 / 9.5-10 | SUIT 50 / 40

wiener
models
A KULT AGENCY

GENNARO LILLIO



Coat: MAXMARA
Pants: DSQUARED2
Scarf: ETRO
Sandals: JILSANDER

HEIGHT 187 CM / 6'1.5" | CHEST 102 CM / 40" | WAIST 85 / 33.5 | HIPS 96 CM / 38" | HAIR BLONDE | EYES BLUE-GREEN
SHOES 43 / 9.5-10 | SUIT 50 / 40

wiener
models
A KULT AGENCY

GENNARO LILLIO



HEIGHT 187 CM / 6'1.5" | CHEST 102 CM / 40" | WAIST 85 / 33.5 | HIPS 96 CM / 38" | HAIR BLONDE | EYES BLUE-GREEN
SHOES 43 / 9.5-10 | SUIT 50 / 40

wiener
models
A KULT AGENCY

GENNARO LILLIO

EDITORIAL

MARBLE CHARM

Photographer: SARA FABBRI | Stylist: ANTONIO CAFAGNA

40



Sweater: D&G
Pants: VALENTINO

HEIGHT 187 CM / 6'1.5" | CHEST 102 CM / 40" | WAIST 85 / 33.5 | HIPS 96 CM / 38" | HAIR BLONDE | EYES BLUE-GREEN
SHOES 43 / 9.5-10 | SUIT 50 / 40

wiener
models
A KULT AGENCY

GENNARO LILLIO

style+

→ Gennaro wears vest
KING & TUCKFIELD
→ Cardigan and trousers
NANUSHKA



HEIGHT 187 CM / 6'1.5" | CHEST 102 CM / 40" | WAIST 85 / 33.5 | HIPS 96 CM / 38" | HAIR BLONDE | EYES BLUE-GREEN
SHOES 43 / 9.5-10 | SUIT 50 / 40

wiener
models
A KULT AGENCY

GENNARO LILLIO



HEIGHT 187 CM / 6'1.5" | CHEST 102 CM / 40" | WAIST 85 / 33.5 | HIPS 96 CM / 38" | HAIR BLONDE | EYES BLUE-GREEN
SHOES 43 / 9.5-10 | SUIT 50 / 40

wiener
models
A KULT AGENCY

GENNARO LILLIO

style+

→ Gennaro wears suit
and bag VERSACE
→ Coat and Trousers
RICHARD JAMES and
jumper PEREGRINE



HEIGHT 187 CM / 6'1.5" | CHEST 102 CM / 40" | WAIST 85 / 33.5 | HIPS 96 CM / 38" | HAIR BLONDE | EYES BLUE-GREEN
SHOES 43 / 9.5-10 | SUIT 50 / 40

wiener
models
A KULT AGENCY

GENNARO LILLIO

Gennaro wears blazer
VERSACE

THE PERFECT MA



HEIGHT 187 CM / 6'1.5" | CHEST 102 CM/40" | WAIST 85 / 33.5 | HIPS 96 CM/38" | HAIR BLONDE | EYES BLUE-GREEN
SHOES 43 / 9.5-10 | SUIT 50 / 40

wiener
models
A KULT AGENCY

GENNARO LILLIO



Total lo
Dolce & Gabbar

HEIGHT 187 CM / 6'1.5" | CHEST 102 CM / 40" | WAIST 85 / 33.5 | HIPS 96 CM / 38" | HAIR BLONDE | EYES BLUE-GREEN
SHOES 43 / 9.5-10 | SUIT 50 / 40

wiener
models
A KULT AGENCY

GENNARO LILLIO



HEIGHT 187 CM / 6'1.5" | CHEST 102 CM / 40" | WAIST 85 / 33.5 | HIPS 96 CM / 38" | HAIR BLONDE | EYES BLUE-GREEN
SHOES 43 / 9.5-10 | SUIT 50 / 40

wiener
models
A KULT AGENCY

GENNARO LILLIO



HEIGHT 187 CM / 6'1.5" | CHEST 102 CM / 40" | WAIST 85 / 33.5 | HIPS 96 CM / 38" | HAIR BLONDE | EYES BLUE-GREEN
SHOES 43 / 9.5-10 | SUIT 50 / 40

wiener
models
A KULT AGENCY

GENNARO LILLIO



HEIGHT 187 CM / 6'1.5" | CHEST 102 CM / 40" | WAIST 85 / 33.5 | HIPS 96 CM / 38" | HAIR BLONDE | EYES BLUE-GREEN
SHOES 43 / 9.5-10 | SUIT 50 / 40

wiener
models
A KULT AGENCY

GENNARO LILLIO



HEIGHT 187 CM / 6'1.5" | CHEST 102 CM / 40" | WAIST 85 / 33.5 | HIPS 96 CM / 38" | HAIR BLONDE | EYES BLUE-GREEN
SHOES 43 / 9.5-10 | SUIT 50 / 40

wiener
models
A KULT AGENCY

GENNARO LILLIO



HEIGHT 187 CM / 6'1.5" | CHEST 102 CM / 40" | WAIST 85 / 33.5 | HIPS 96 CM / 38" | HAIR BLONDE | EYES BLUE-GREEN
SHOES 43 / 9.5-10 | SUIT 50 / 40

wiener
models
A KULT AGENCY

GENNARO LILLIO



HEIGHT 187 CM / 6'1.5" | CHEST 102 CM / 40" | WAIST 85 / 33.5 | HIPS 96 CM / 38" | HAIR BLONDE | EYES BLUE-GREEN
SHOES 43 / 9.5-10 | SUIT 50 / 40

wiener
models
A KULT AGENCY

GENNARO LILLIO



HEIGHT 187 CM / 6'1.5" | CHEST 102 CM / 40" | WAIST 85 / 33.5 | HIPS 96 CM / 38" | HAIR BLONDE | EYES BLUE-GREEN
SHOES 43 / 9.5-10 | SUIT 50 / 40

wiener
models
A KULT AGENCY

GENNARO LILLIO



HEIGHT 187 CM / 6'1.5" | CHEST 102 CM / 40" | WAIST 85 / 33.5 | HIPS 96 CM / 38" | HAIR BLONDE | EYES BLUE-GREEN
SHOES 43 / 9.5-10 | SUIT 50 / 40

wiener
models
A KULT AGENCY

GENNARO LILLIO



HEIGHT 187 CM / 6'1.5" | CHEST 102 CM / 40" | WAIST 85 / 33.5 | HIPS 96 CM / 38" | HAIR BLONDE | EYES BLUE-GREEN
SHOES 43 / 9.5-10 | SUIT 50 / 40

wiener
models
A KULT AGENCY

GENNARO LILLIO



HEIGHT 187 CM / 6'1.5" | CHEST 102 CM / 40" | WAIST 85 / 33.5 | HIPS 96 CM / 38" | HAIR BLONDE | EYES BLUE-GREEN
SHOES 43 / 9.5-10 | SUIT 50 / 40

wiener
models
A KULT AGENCY

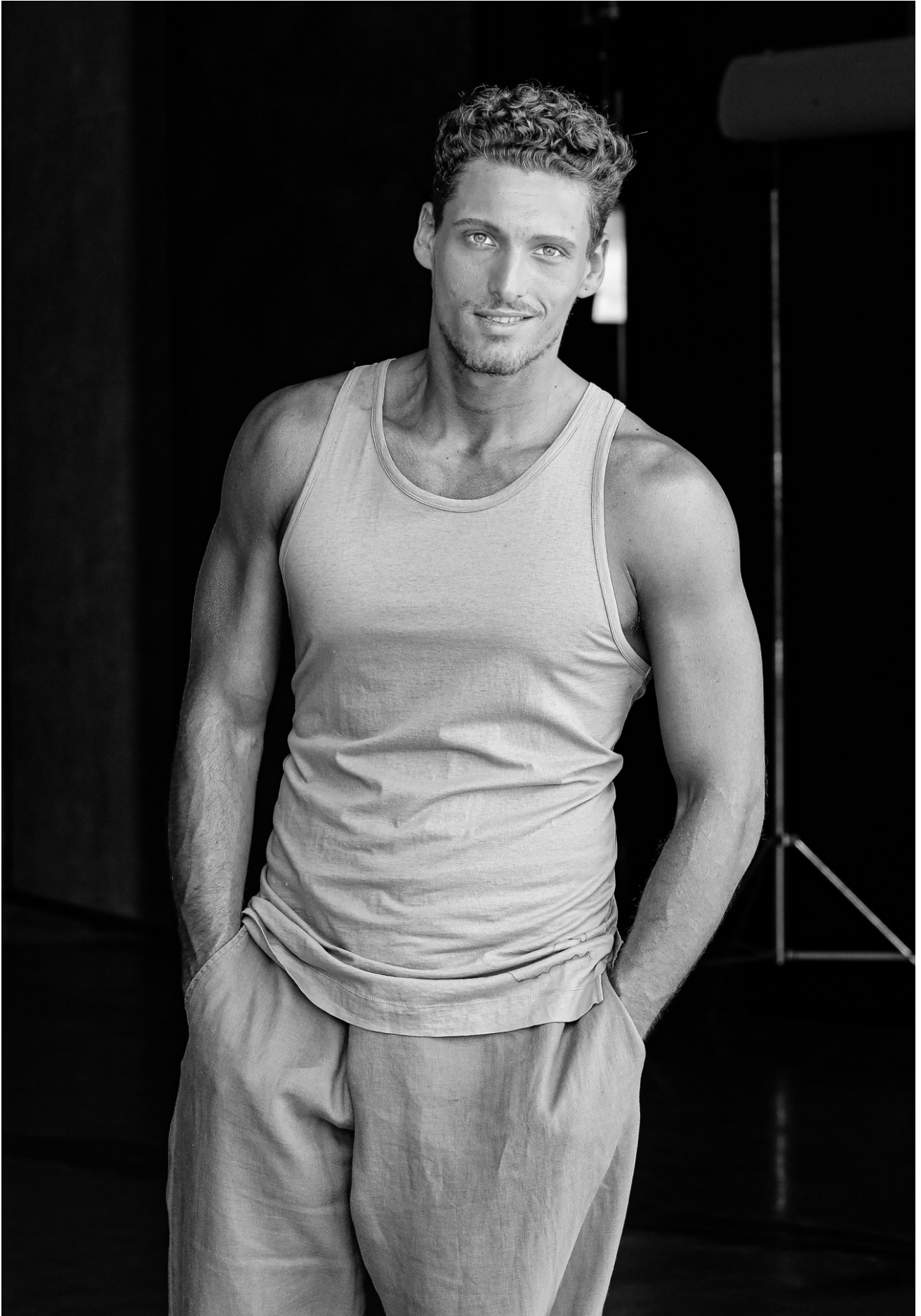
GENNARO LILLIO



HEIGHT 187 CM / 6'1.5" | CHEST 102 CM / 40" | WAIST 85 / 33.5 | HIPS 96 CM / 38" | HAIR BLONDE | EYES BLUE-GREEN
SHOES 43 / 9.5-10 | SUIT 50 / 40

wiener
models
A KULT AGENCY

GENNARO LILLIO



HEIGHT 187 CM / 6'1.5" | CHEST 102 CM / 40" | WAIST 85 / 33.5 | HIPS 96 CM / 38" | HAIR BLONDE | EYES BLUE-GREEN
SHOES 43 / 9.5-10 | SUIT 50 / 40

wiener
models
A KULT AGENCY

GENNARO LILLIO



HEIGHT 187 CM / 6'1.5" | CHEST 102 CM / 40" | WAIST 85 / 33.5 | HIPS 96 CM / 38" | HAIR BLONDE | EYES BLUE-GREEN
SHOES 43 / 9.5-10 | SUIT 50 / 40

wiener
models
A KULT AGENCY