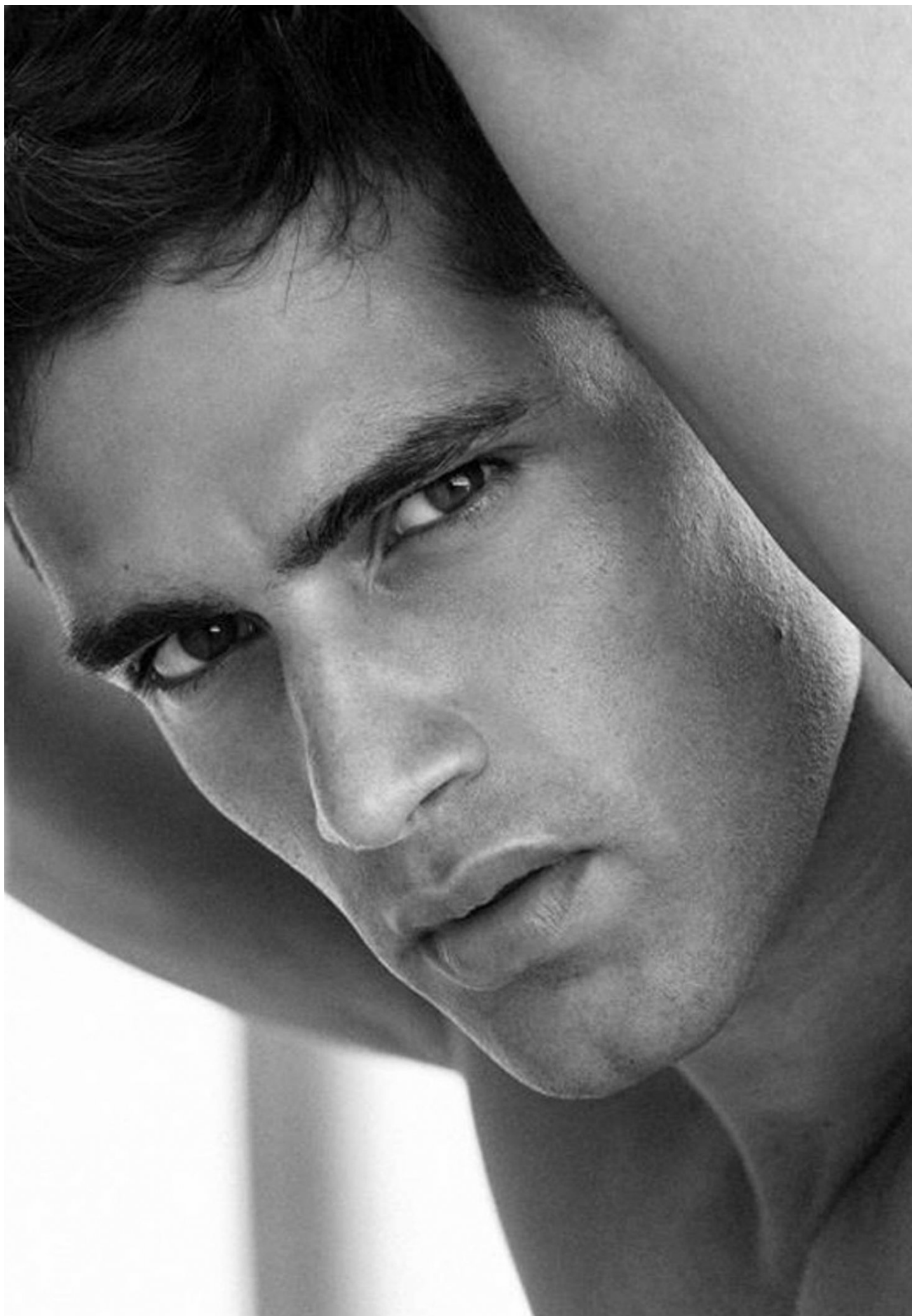


FABIO MANCINI



HEIGHT 188 CM / 6'2" | CHEST 98 CM / 38.5" | WAIST 81 / 32 | HIPS 96 CM / 38" | HAIR BROWN | EYES BLUE-GRAY
SHOES 46 / 12.5-13 | SUIT 50 / 40 | COLLAR 39 / 15.5

wiener
models
A KULT AGENCY

FABIO MANCINI



*Was sich die besten
Männermodemacher aus
Deutschland, Österreich und
der Schweiz für die neue
Saison ausgedacht haben,
zeigen wir Ihnen hier: acht
MODETRENDS FÜR
STILBEWUSSTE*

produktion
RONALD BECKER
fotos
THOMAS VON AAGH

Unsere
Prognose für
Frühjahr und
Sommer:

Es wird
lässig bis chic

108

HEIGHT 188 CM / 6'2" | CHEST 98 CM / 38.5" | WAIST 81 / 32 | HIPS 96 CM / 38" | HAIR BROWN | EYES BLUE-GRAY
SHOES 46 / 12.5-13 | SUIT 50 / 40 | COLLAR 39 / 15.5

wiener
models
A KULT AGENCY

FABIO MANCINI



HEIGHT 188 CM / 6'2" | CHEST 98 CM / 38.5" | WAIST 81 / 32 | HIPS 96 CM / 38" | HAIR BROWN | EYES BLUE-GRAY
SHOES 46 / 12.5-13 | SUIT 50 / 40 | COLLAR 39 / 15.5

wiener
models
A KULT AGENCY

FABIO MANCINI

LIMITED EDITION - THE KINKY ISSUE

ITALIA

L'OFFICIEL

HOMMES

DIGITAL PROJECT - LUGLIO 2020

THE NOW

SEXY

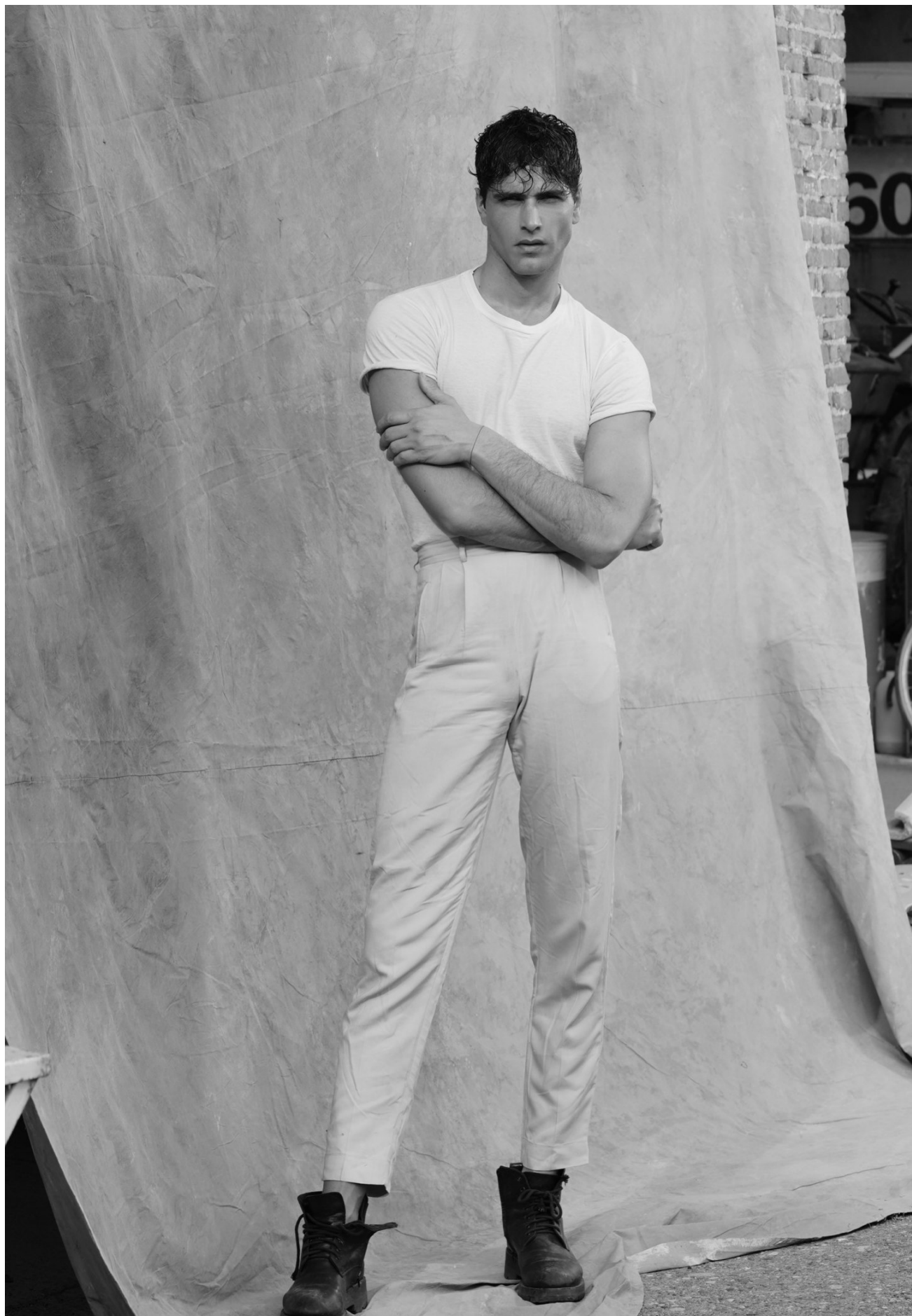
Fabio Mancini
by Elvis Di Fazio

VERSACE & REEBOK

HEIGHT 188 CM / 6'2" | CHEST 98 CM / 38.5" | WAIST 81 / 32 | HIPS 96 CM / 38" | HAIR BROWN | EYES BLUE-GRAY
SHOES 46 / 12.5-13 | SUIT 50 / 40 | COLLAR 39 / 15.5

wiener
models
A KULT AGENCY

FABIO MANCINI



HEIGHT 188 CM / 6'2" | CHEST 98 CM / 38.5" | WAIST 81 / 32 | HIPS 96 CM / 38" | HAIR BROWN | EYES BLUE-GRAY
SHOES 46 / 12.5-13 | SUIT 50 / 40 | COLLAR 39 / 15.5

wiener
models
A KULT AGENCY

FABIO MANCINI



HEIGHT 188 CM / 6'2" | CHEST 98 CM / 38.5" | WAIST 81 / 32 | HIPS 96 CM / 38" | HAIR BROWN | EYES BLUE-GRAY
SHOES 46 / 12.5-13 | SUIT 50 / 40 | COLLAR 39 / 15.5

wiener
models
A KULT AGENCY

FABIO MANCINI

- **Sportlicher
Musterstrick**

Bei der Maschenware gibt es 2023 wieder ausgefallene Dessins. Am besten wirken sie, wenn der Rest des Outfits einfarbig gehalten ist. Besonders lässig dazu: Raw Denim oder die ausgewaschene Lieblingsjeans.

Poloshirt aus Jacquard-Strick aus einer Kunstfaser-Leinen-Mischung mit knopflosem V-Ausschnitt, ca. 90 Euro. Von CG - Club of Gents



HEIGHT 188 CM / 6'2" | CHEST 98 CM/38.5" | WAIST 81 / 32 | HIPS 96 CM/38" | HAIR BROWN | EYES BLUE-GRAY

SHOES 46 / 12.5-13 | SUIT 50 / 40 | COLLAR 39 / 15.5

wiener
models
A KULT AGENCY

FABIO MANCINI



HEIGHT 188 CM / 6'2" | CHEST 98 CM / 38.5" | WAIST 81 / 32 | HIPS 96 CM / 38" | HAIR BROWN | EYES BLUE-GRAY
SHOES 46 / 12.5-13 | SUIT 50 / 40 | COLLAR 39 / 15.5

wiener
models
A KULT AGENCY

FABIO MANCINI



HEIGHT 188 CM / 6'2" | CHEST 98 CM / 38.5" | WAIST 81 / 32 | HIPS 96 CM / 38" | HAIR BROWN | EYES BLUE-GRAY
SHOES 46 / 12.5-13 | SUIT 50 / 40 | COLLAR 39 / 15.5

wiener
models
A KULT AGENCY

FABIO MANCINI



Luftige • Eleganz

Die neuen Soft Suits sind so leicht, dass man sie kaum auf dem Körper spürt. Das geht natürlich nur mit Kunst- und Stretchfasern. Die sind hautsympathisch weiterentwickelt worden, sodass man sie auch gern im Sommer trägt.

2-Knopf-Sakko, ca. 250 Euro,
Hose mit Aufschlag,
ca. 120 Euro, beides aus
einer Kunstfaser-Elasthan-
Mischung; Polohemd aus
Kunstfaser und Baumwolle,
ca. 100 Euro; Kalbsleder-
schlappen mit überkreuzten
Riemen, Fußbett und Gummi-
sohle, ca. 100 Euro.

Alles von Cinque

111

HEIGHT 188 CM / 6'2" | CHEST 98 CM / 38.5" | WAIST 81 / 32 | HIPS 96 CM / 38" | HAIR BROWN | EYES BLUE-GRAY
SHOES 46 / 12.5-13 | SUIT 50 / 40 | COLLAR 39 / 15.5

wiener
models
A KULT AGENCY

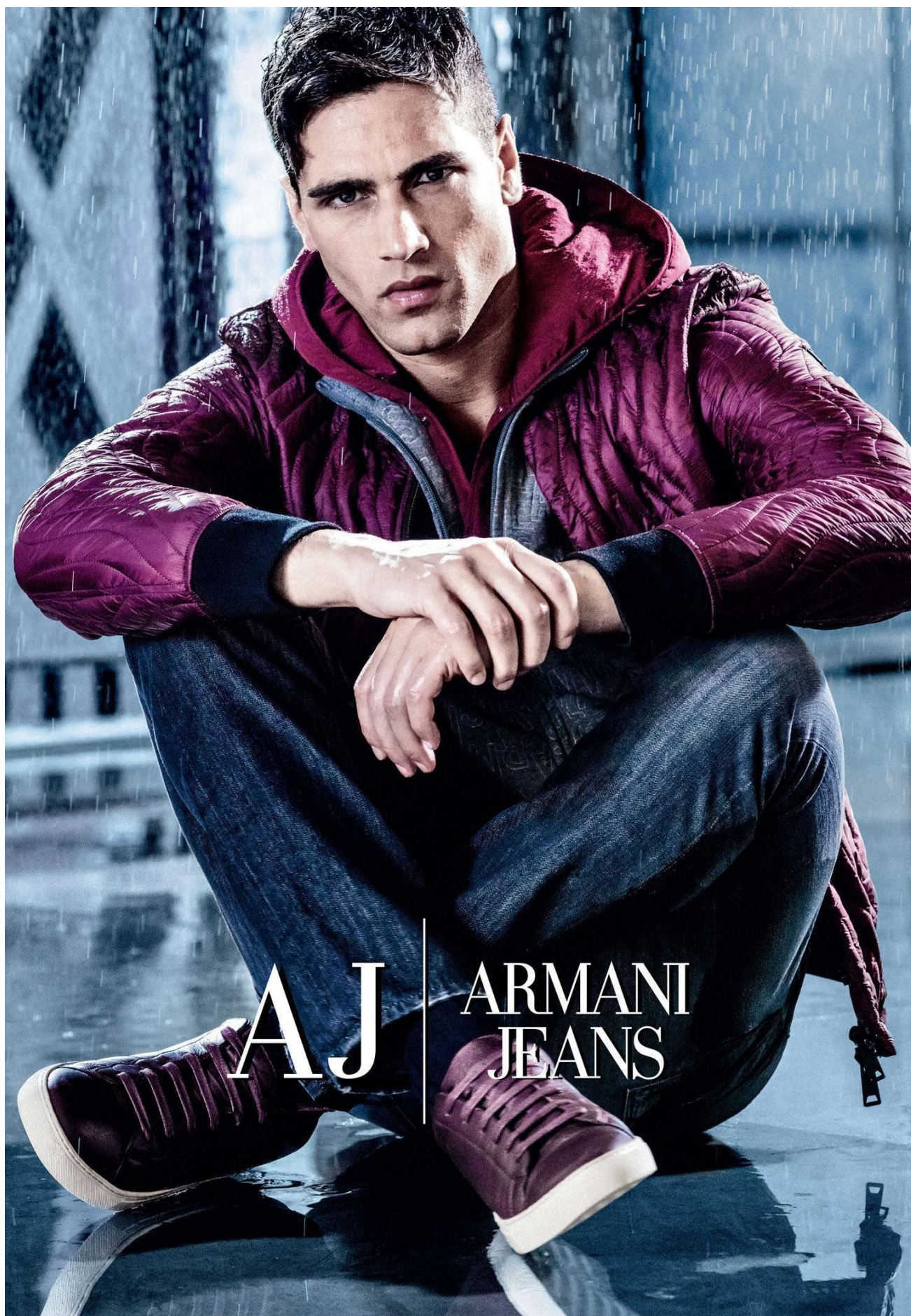
FABIO MANCINI



HEIGHT 188 CM / 6'2" | CHEST 98 CM / 38.5" | WAIST 81 / 32 | HIPS 96 CM / 38" | HAIR BROWN | EYES BLUE-GRAY
SHOES 46 / 12.5-13 | SUIT 50 / 40 | COLLAR 39 / 15.5

wiener
models
A KULT AGENCY

FABIO MANCINI



HEIGHT 188 CM / 6'2" | CHEST 98 CM / 38.5" | WAIST 81 / 32 | HIPS 96 CM / 38" | HAIR BROWN | EYES BLUE-GRAY
SHOES 46 / 12.5-13 | SUIT 50 / 40 | COLLAR 39 / 15.5

wiener
models
A KULT AGENCY

FABIO MANCINI



FABIO MANCINI BY WONG SIM

HEIGHT 188 CM / 6'2" | CHEST 98 CM / 38.5" | WAIST 81 / 32 | HIPS 96 CM / 38" | HAIR BROWN | EYES BLUE-GRAY
SHOES 46 / 12.5-13 | SUIT 50 / 40 | COLLAR 39 / 15.5

wiener
models
A KULT AGENCY

FABIO MANCINI



Revija za moške s stilom

19
2015

DIETER MORSZECK
TRANSPORTNI INOVATOR

DUNCAN MCRAE
ZALJUBLJEN V DŽIN

THOMAS HENRY
PIONIR OSVEŽILNIH PIJAČ

BRYCE DALLAS HOWARD
LEPOTICA IZ JURKEGA SVETA

Antonio Lujak
LA FOREVER

Fabio Mancini
LA GRANDE
BELLEZZA

Bine Volčič
KUCHAR S TV-EKRANA

Scott Eastwood
OCEAN JE ZAČETEK

**LEGENDARNI
MIŠIČNJAK**
Arnold Schwarzenegger

ISSN 2232-559X



9 772232 559007 >

6 €

www.edavid.si

HEIGHT 188 CM / 6'2" | CHEST 98 CM / 38.5" | WAIST 81 / 32 | HIPS 96 CM / 38" | HAIR BROWN | EYES BLUE-GRAY

SHOES 46 / 12.5-13 | SUIT 50 / 40 | COLLAR 39 / 15.5

wiener
models
A KULT AGENCY

FABIO MANCINI



HEIGHT 188 CM / 6'2" | CHEST 98 CM / 38.5" | WAIST 81 / 32 | HIPS 96 CM / 38" | HAIR BROWN | EYES BLUE-GRAY
SHOES 46 / 12.5-13 | SUIT 50 / 40 | COLLAR 39 / 15.5

wiener
models
A KULT AGENCY

FABIO MANCINI



HEIGHT 188 CM / 6'2" | CHEST 98 CM / 38.5" | WAIST 81 / 32 | HIPS 96 CM / 38" | HAIR BROWN | EYES BLUE-GRAY
SHOES 46 / 12.5-13 | SUIT 50 / 40 | COLLAR 39 / 15.5

wiener
models
A KULT AGENCY

FABIO MANCINI

WITH STYLE



/BLAZER VS SWEATER: GIANLUCA ISAIA AND MARCELO BURLON
/ALESSIO VASSALO FASHION ON SET
/TONY HADLEY
/JOSEPH GORDON-LEVITT
/FROM LONDON TO LONDON
/DREAM WATCH

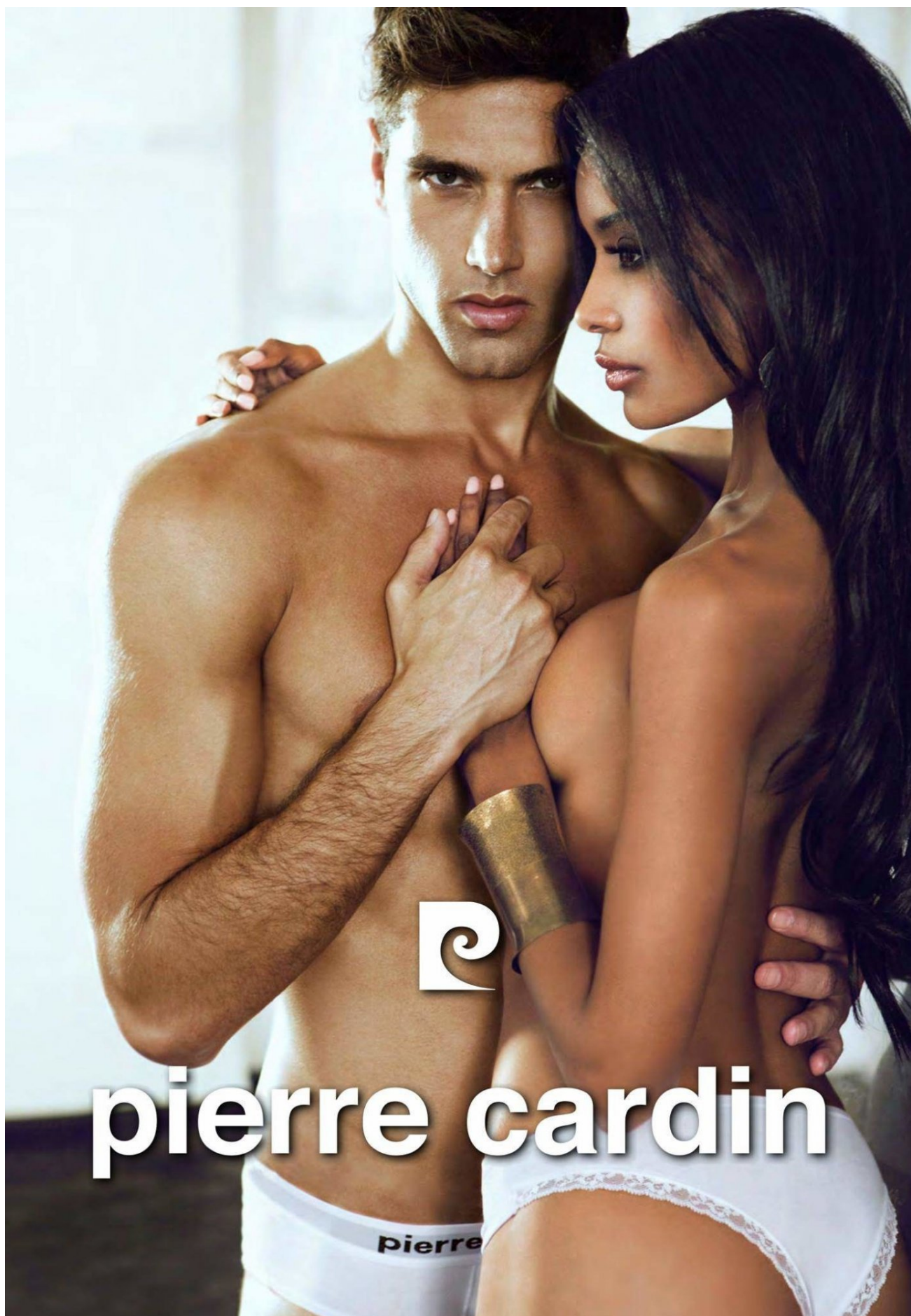
ISSUE 1
YEAR I
DECEMBER 2016

3.90 €

HEIGHT 188 CM / 6'2" | CHEST 98 CM/38.5" | WAIST 81 / 32 | HIPS 96 CM/38" | HAIR BROWN | EYES BLUE-GRAY
SHOES 46 / 12.5-13 | SUIT 50 / 40 | COLLAR 39 / 15.5

wiener
models
A KULT AGENCY

FABIO MANCINI



pierre cardin

HEIGHT 188 CM / 6'2" | CHEST 98 CM / 38.5" | WAIST 81 / 32 | HIPS 96 CM / 38" | HAIR BROWN | EYES BLUE-GRAY
SHOES 46 / 12.5-13 | SUIT 50 / 40 | COLLAR 39 / 15.5

wiener
models
A KULT AGENCY

FABIO MANCINI

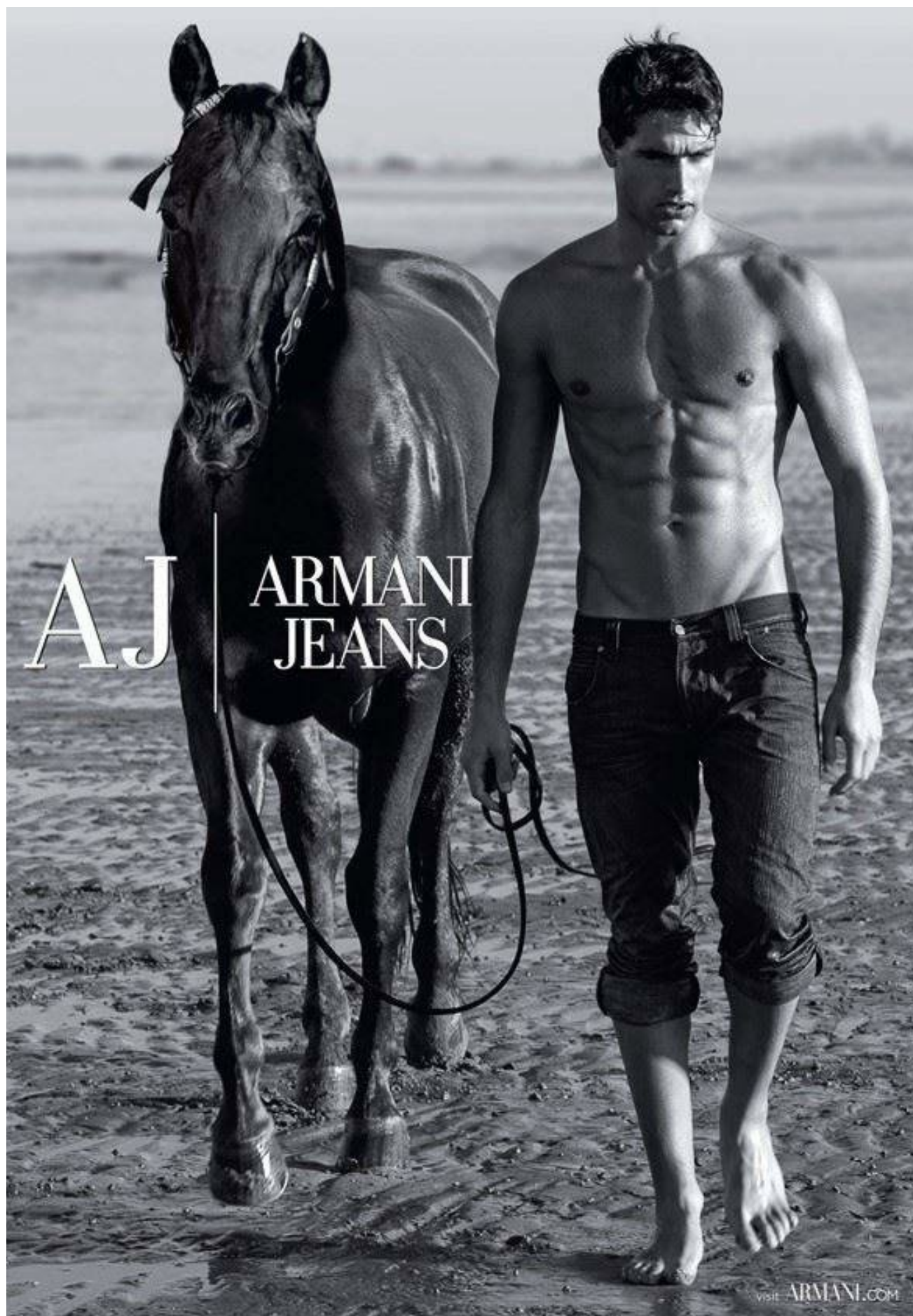


AJ | ARMANI
JEANS

HEIGHT 188 CM / 6'2" | CHEST 98 CM / 38.5" | WAIST 81 / 32 | HIPS 96 CM / 38" | HAIR BROWN | EYES BLUE-GRAY
SHOES 46 / 12.5-13 | SUIT 50 / 40 | COLLAR 39 / 15.5

wiener
models
A KULT AGENCY

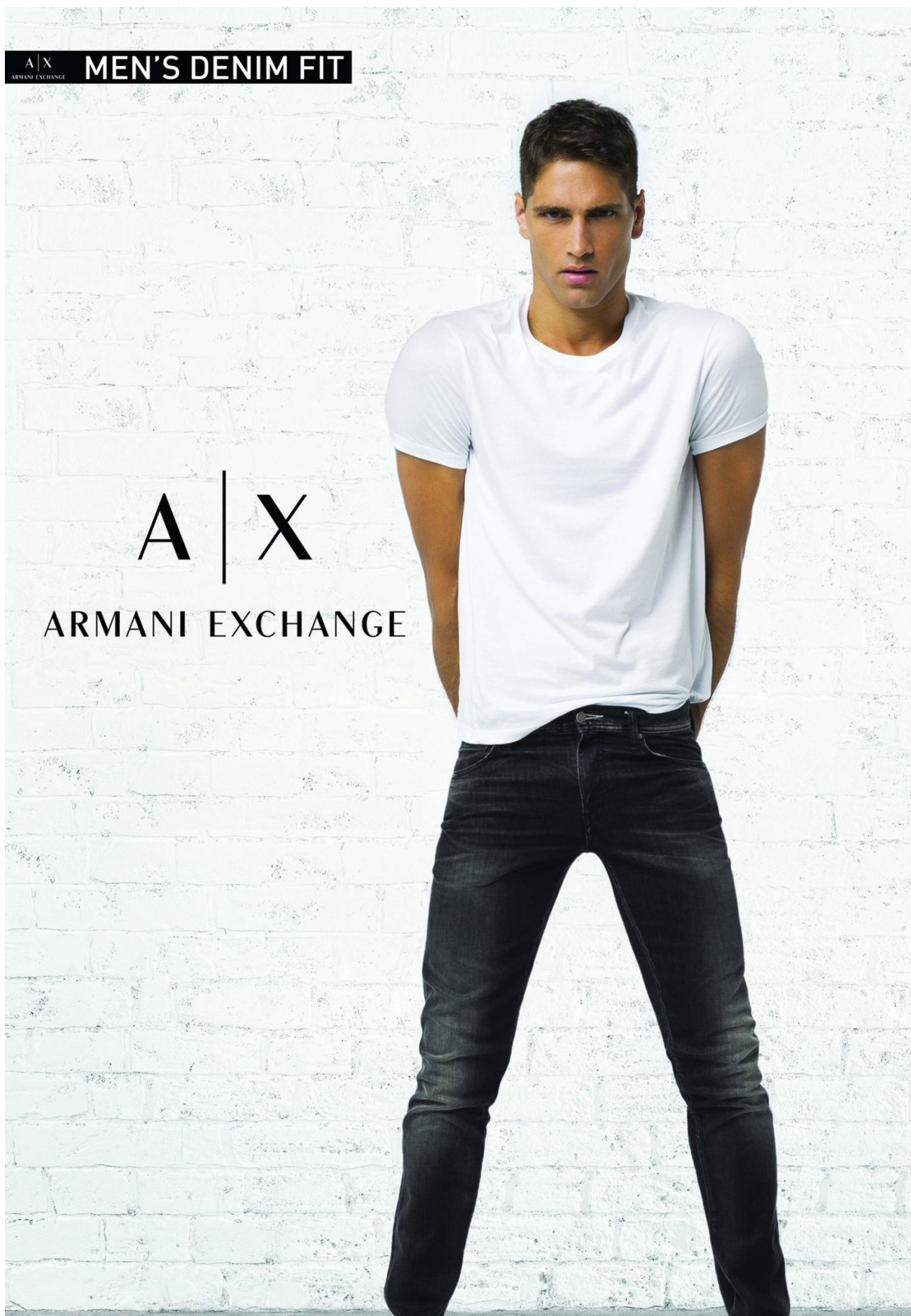
FABIO MANCINI



HEIGHT 188 CM / 6'2" | CHEST 98 CM / 38.5" | WAIST 81 / 32 | HIPS 96 CM / 38" | HAIR BROWN | EYES BLUE-GRAY
SHOES 46 / 12.5-13 | SUIT 50 / 40 | COLLAR 39 / 15.5

wiener
models
A KULT AGENCY

FABIO MANCINI



A | X
ARMANI EXCHANGE

MEN'S DENIM FIT

A | X

ARMANI EXCHANGE

HEIGHT 188 CM / 6'2" | CHEST 98 CM / 38.5" | WAIST 81 / 32 | HIPS 96 CM / 38" | HAIR BROWN | EYES BLUE-GRAY
SHOES 46 / 12.5-13 | SUIT 50 / 40 | COLLAR 39 / 15.5

wiener
models
A KULT AGENCY

FABIO MANCINI



HEIGHT 188 CM / 6'2" | CHEST 98 CM/38.5" | WAIST 81 / 32 | HIPS 96 CM/38" | HAIR BROWN | EYES BLUE-GRAY
SHOES 46 / 12.5-13 | SUIT 50 / 40 | COLLAR 39 / 15.5

wiener
models
A KULT AGENCY

FABIO MANCINI

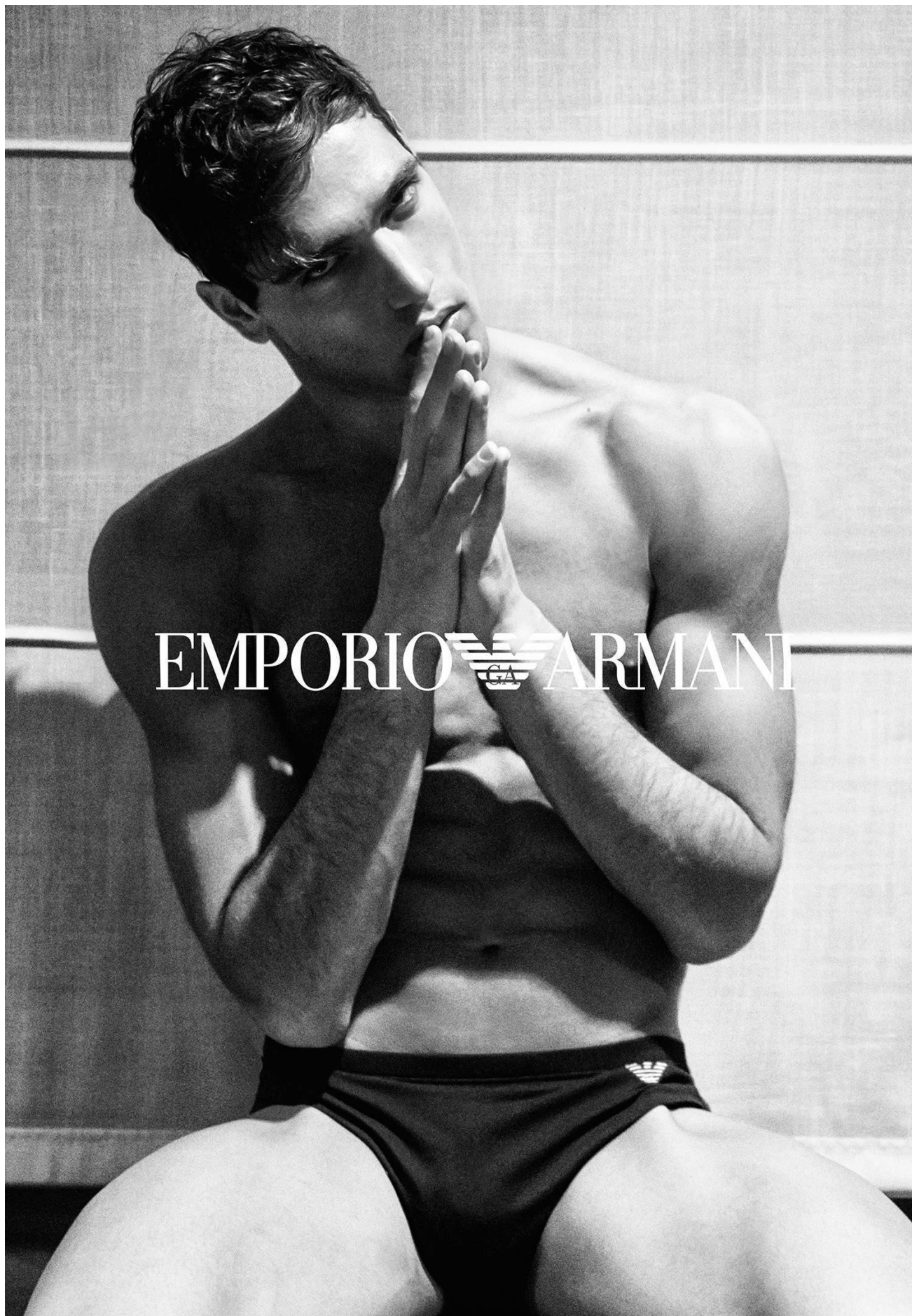
roberto cavalli



HEIGHT 188 CM / 6'2" | CHEST 98 CM/38.5" | WAIST 81 / 32 | HIPS 96 CM/38" | HAIR BROWN | EYES BLUE-GRAY
SHOES 46 / 12.5-13 | SUIT 50 / 40 | COLLAR 39 / 15.5

wiener
models
A KULT AGENCY

FABIO MANCINI



HEIGHT 188 CM / 6'2" | CHEST 98 CM / 38.5" | WAIST 81 / 32 | HIPS 96 CM / 38" | HAIR BROWN | EYES BLUE-GRAY
SHOES 46 / 12.5-13 | SUIT 50 / 40 | COLLAR 39 / 15.5

wiener
models
A KULT AGENCY